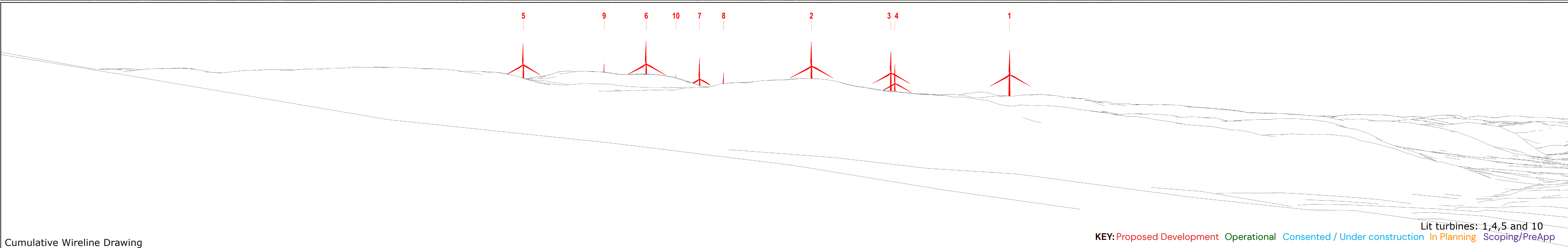




Baseline Photograph



Cumulative Wireline Drawing

Viewpoint Information

FOEL FACH WIND FARM

OS Reference: E290783, N343741
Ground level: 369m (AOD)

Distance to nearest turbine: 3551m (T2)
Bearing to centre of photograph: 128°

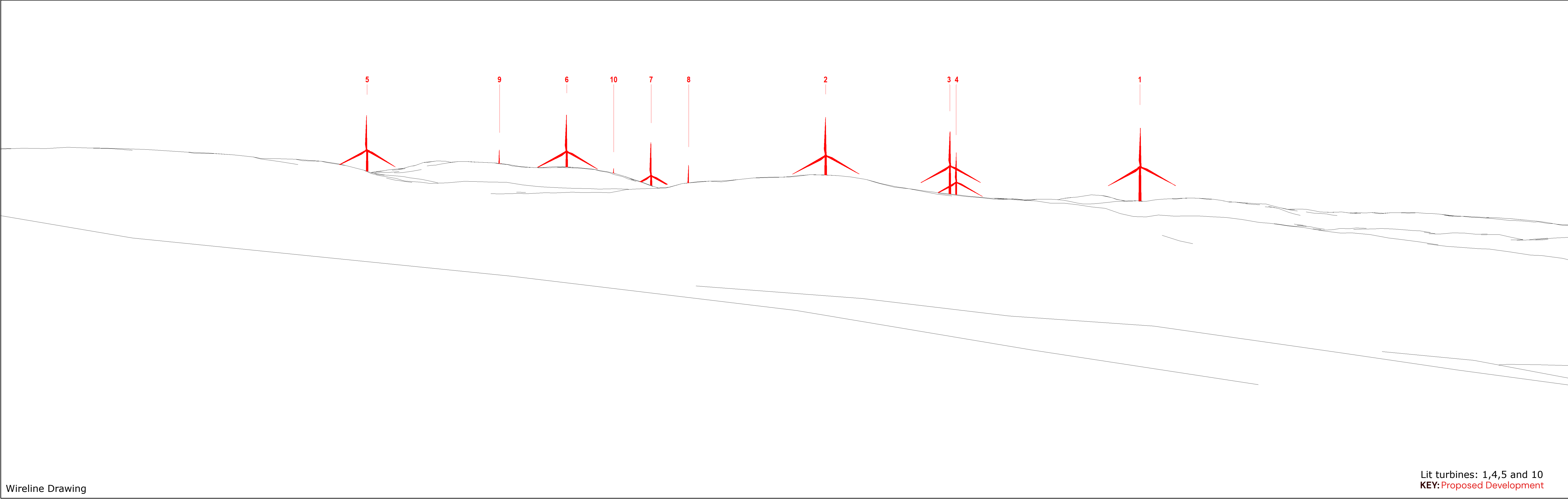
Angle of view: 90° (cylindrical)
Principal distance: 500mm
Paper size: 841 x 297 mm (half A1)
Correct printed image size: 820 x 260mm

Camera: Canon 5D III, FFS
Lens: 50mm Fixed Focal Lens
Height: 1.5m
Date & Time: 06/08/2024 @ 17:48

KEY: Proposed Development Operational Consented / Under construction In Planning Scoping/PreApp

Lit turbines: 1,4,5 and 10



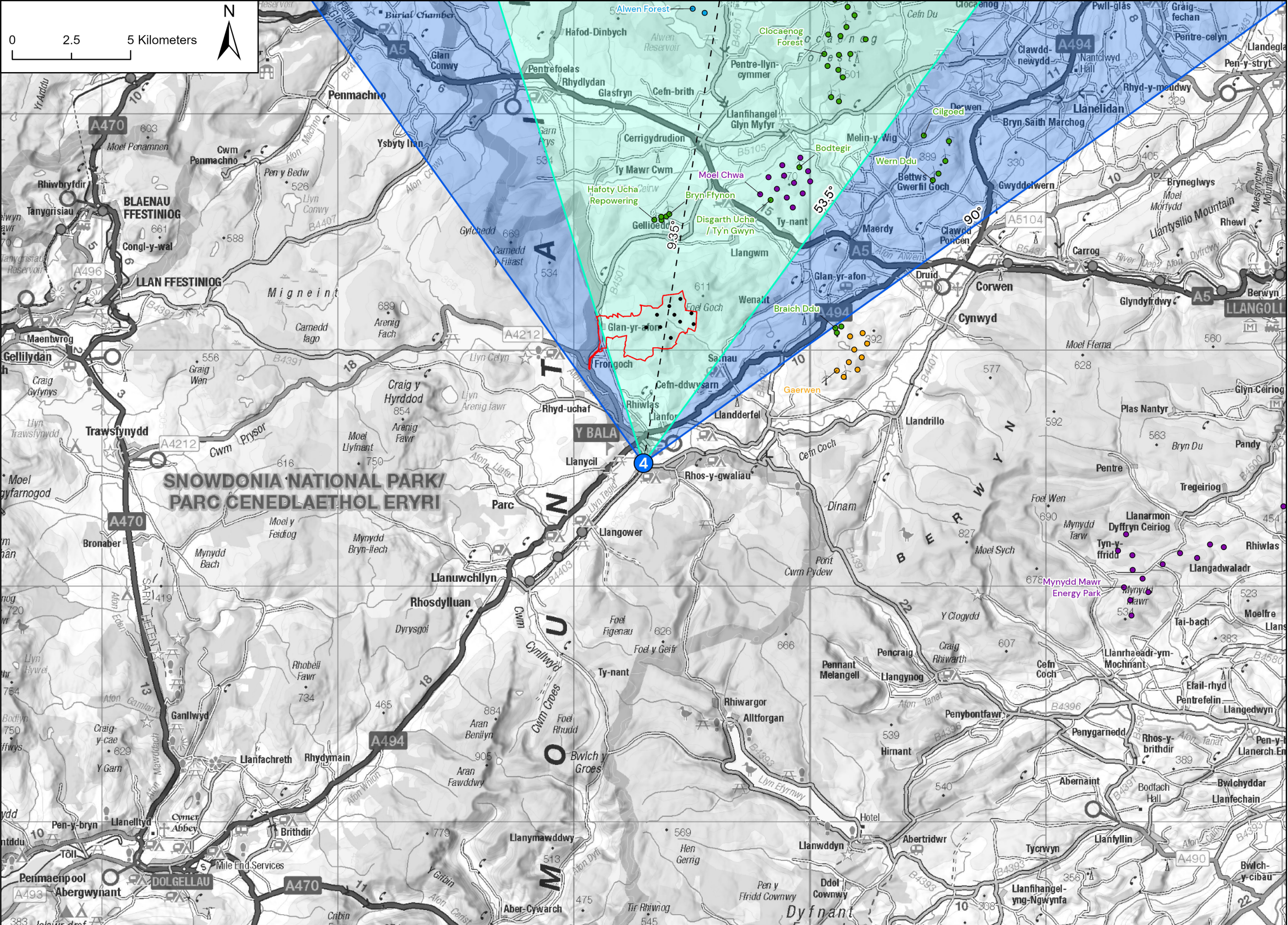


Wireline Drawing

Lit turbines: 1,4,5 and 10
KEY: Proposed Development

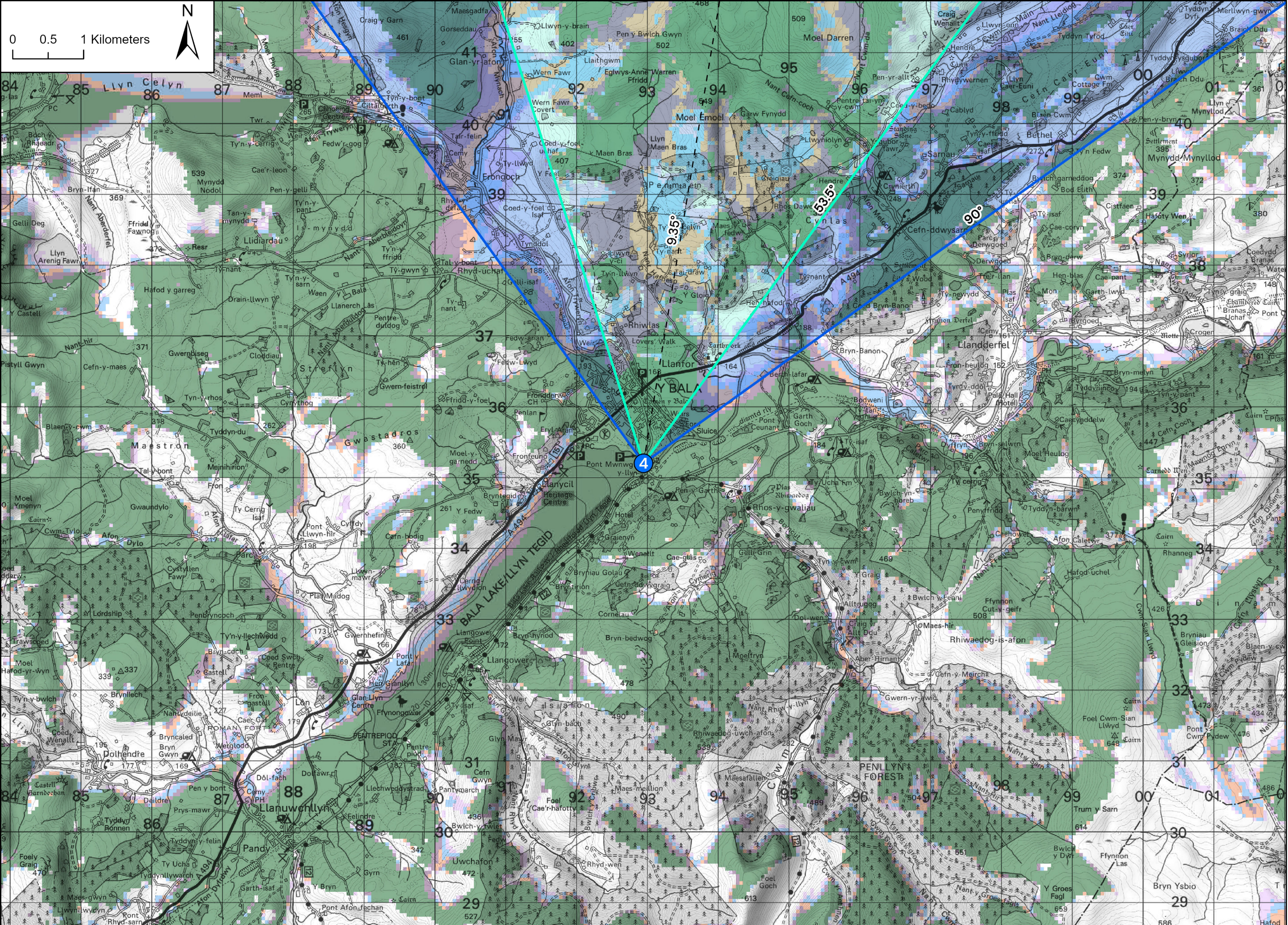


Photomontage



Viewpoint Location Plan - Site Context and Cumulative Wind Farms - Scale 1:150,000

FOEL FACH WIND FARM



Viewpoint Location Plan - Visual Extents and Blade Tip ZTV - Scale 1:50,000

Key

- Application Boundary
- Turbine Layout

Blade Tip Zone of Theoretical Visibility (Various Heights)

- 1 to 2 Turbines Visible
- 3 to 4 Turbines Visible
- 5 to 6 Turbines Visible
- 7 to 8 Turbines Visible
- 9 to 10 Turbines Visible

Wind Farm Status

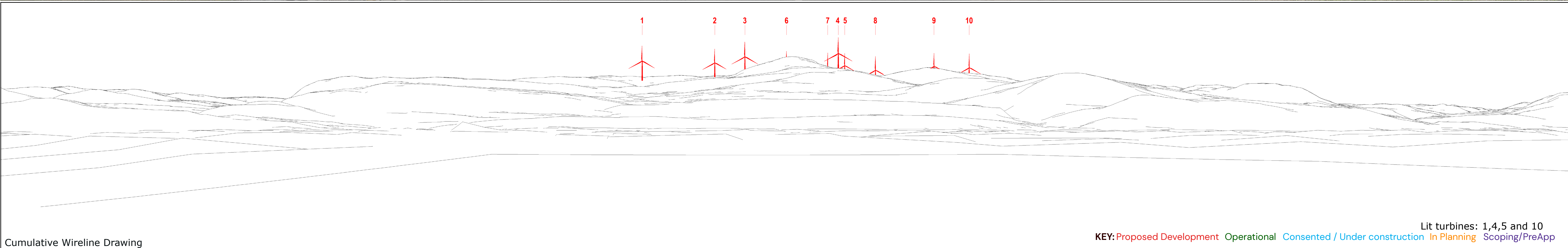
- Operational
- Consented / Under Construction
- In Planning
- Scoping

Viewpoint Information

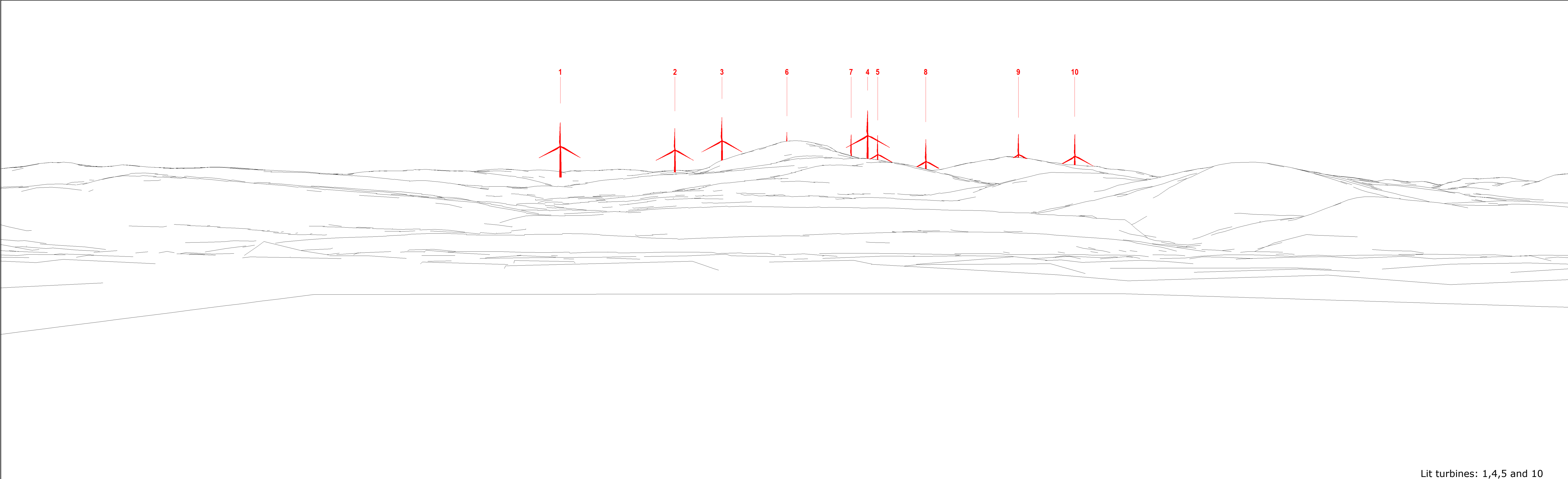
- LVIA Viewpoint
- Centre of Visualisation (Bearing)
- 53.5° Field of View
- 90° Field of View



Baseline Photograph



Cumulative Wireline Drawing



Wireline Drawing

Lit turbines: 1,4,5 and 10
KEY: Proposed Development



Photomontage

Viewpoint Information

FOEL FACH WIND FARM

OS Reference: E292945, N335202
Ground level: 163m (AOD)

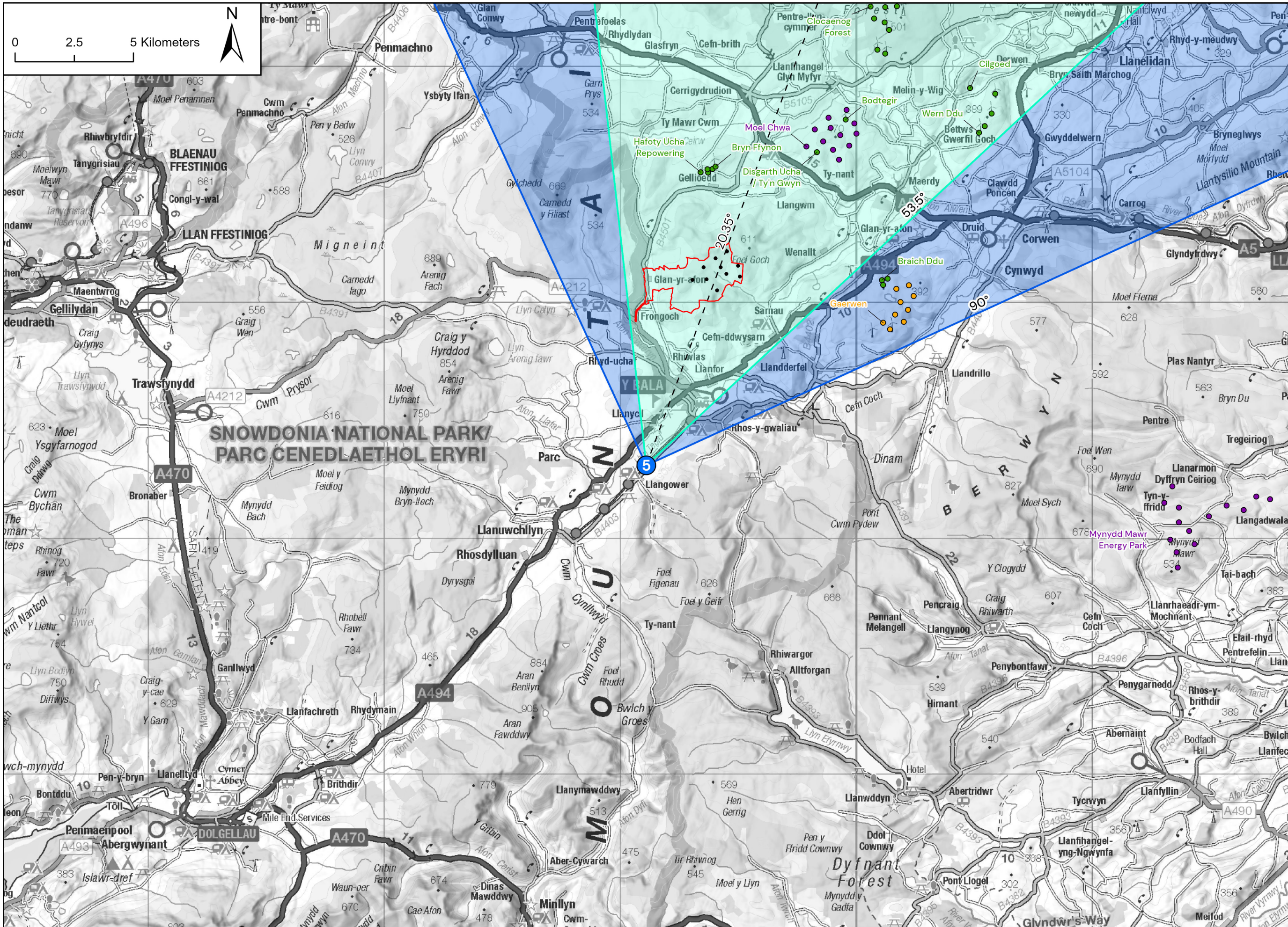
Distance to nearest turbine: 5429m (T4)
Bearing to centre of photograph: 9.35°

Angle of view: 53.5° (planar)
Principal distance: 812.5mm
Paper size: 841 x 297 mm (half A1)
Correct printed image size: 820 x 260mm

Camera: Canon 5D III, FFS
Lens: 50mm Fixed Focal Lens
Height: 1.5m
Date & Time: 06/08/2024 @ 15:20

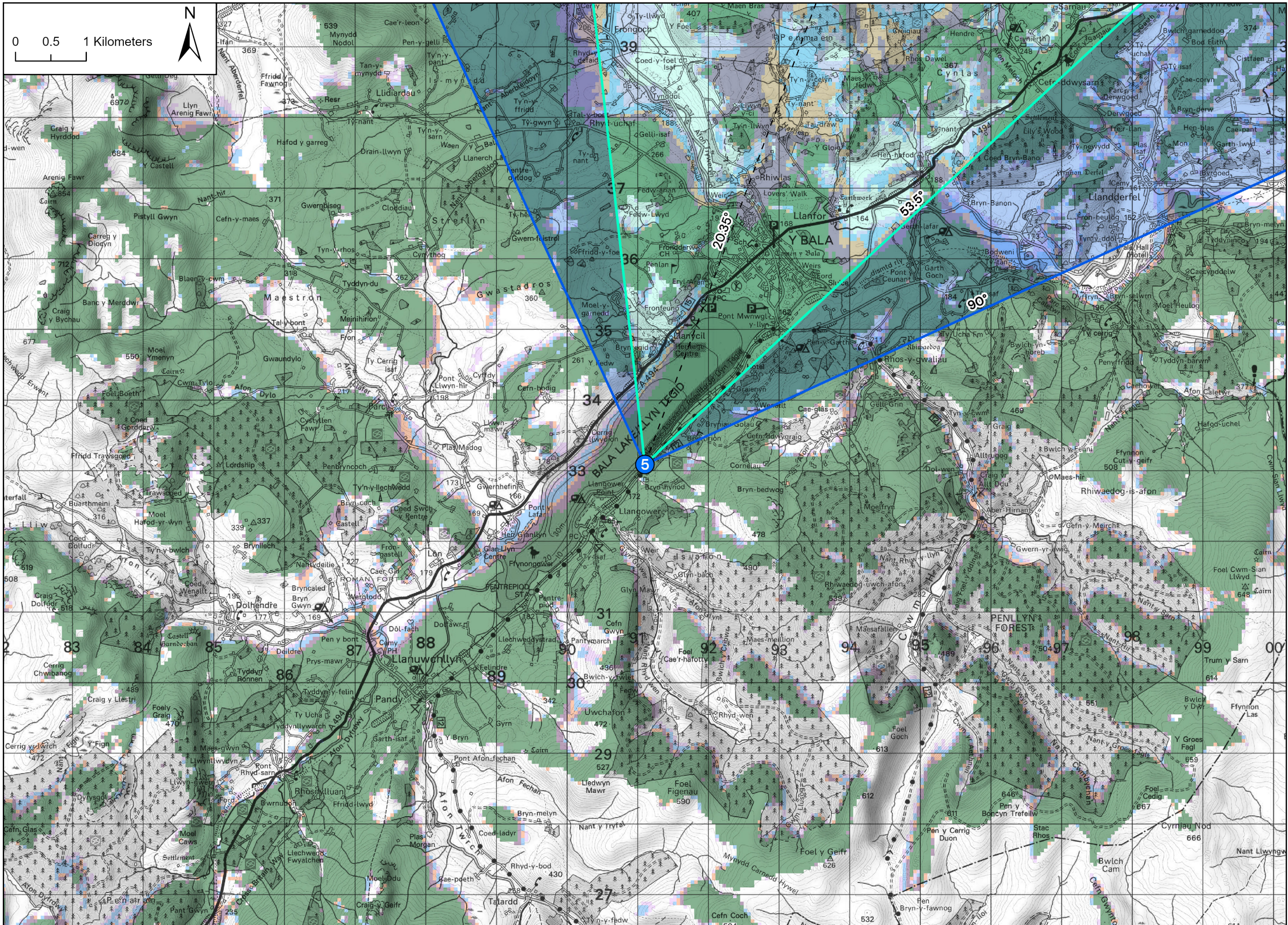


(Sheet D)
Viewpoint 4: Mwnwgl-y-llyn Bridge

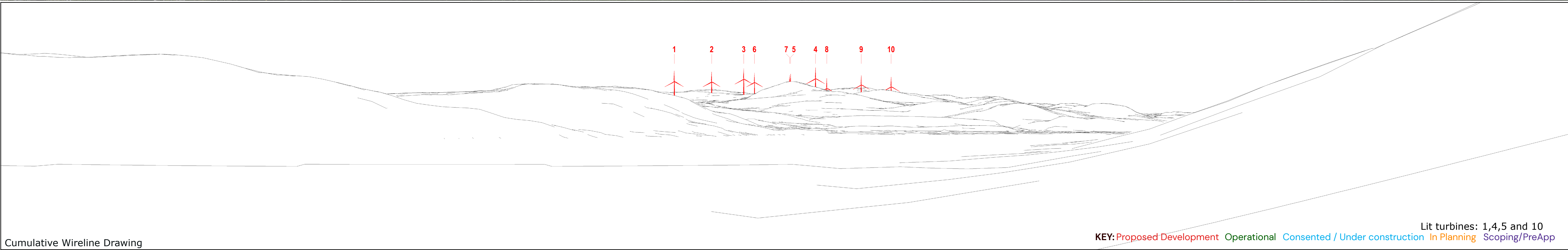
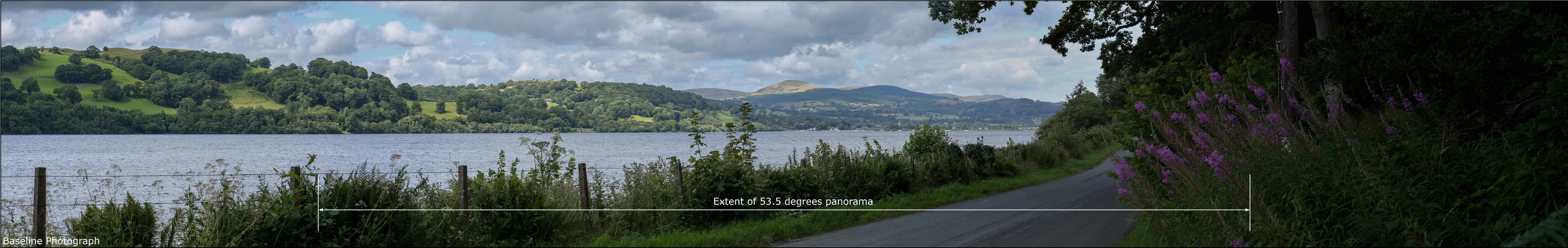


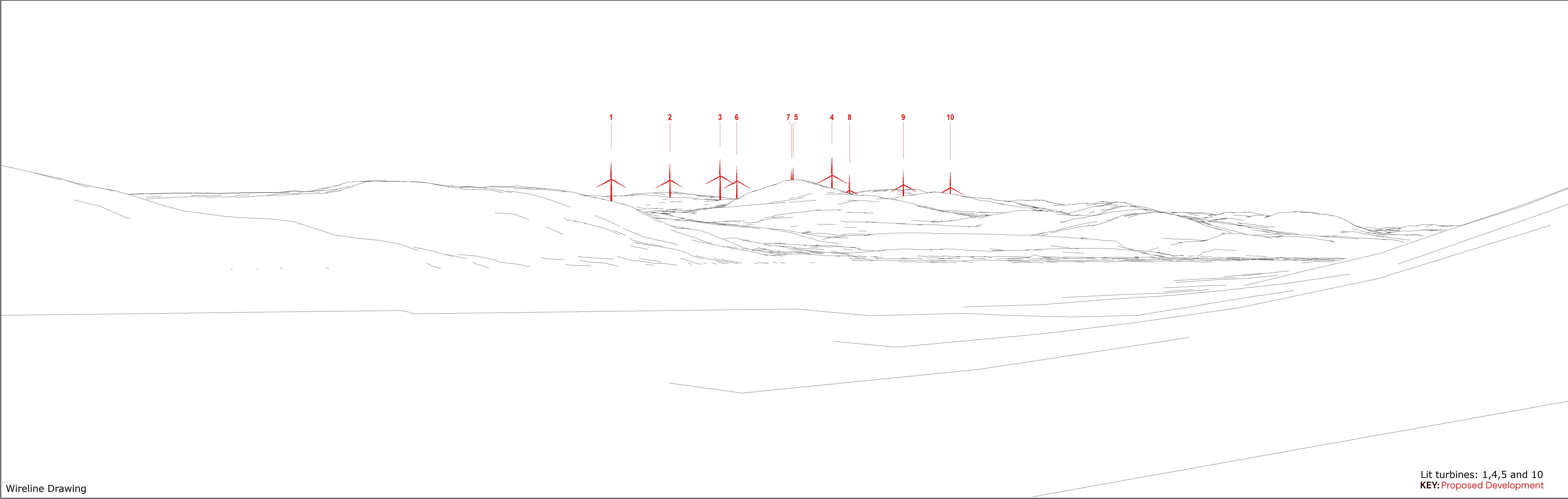
Viewpoint Location Plan - Site Context and Cumulative Wind Farms - Scale 1:150,000

FOEL FACH WIND FARM



Viewpoint Location Plan - Visual Extents and Blade Tip ZTV - Scale 1:50,000





Wireline Drawing

Lit turbines: 1,4,5 and 10
KEY: Proposed Development



Photomontage

Viewpoint Information

FOEL FACH WIND FARM

OS Reference: E291102, N333088
Ground level: 168m (AOD)

Distance to nearest turbine: 8003m (T4)
Bearing to centre of photograph: 20.35°

Angle of view: 53.5° (planar)
Principal distance: 812.5mm
Paper size: 841 x 297 mm (half A1)
Correct printed image size: 820 x 260mm

Camera: Canon 5D III, FFS
Lens: 50mm Fixed Focal Lens
Height: 1.5m
Date & Time: 06/08/2024 @ 14:58

