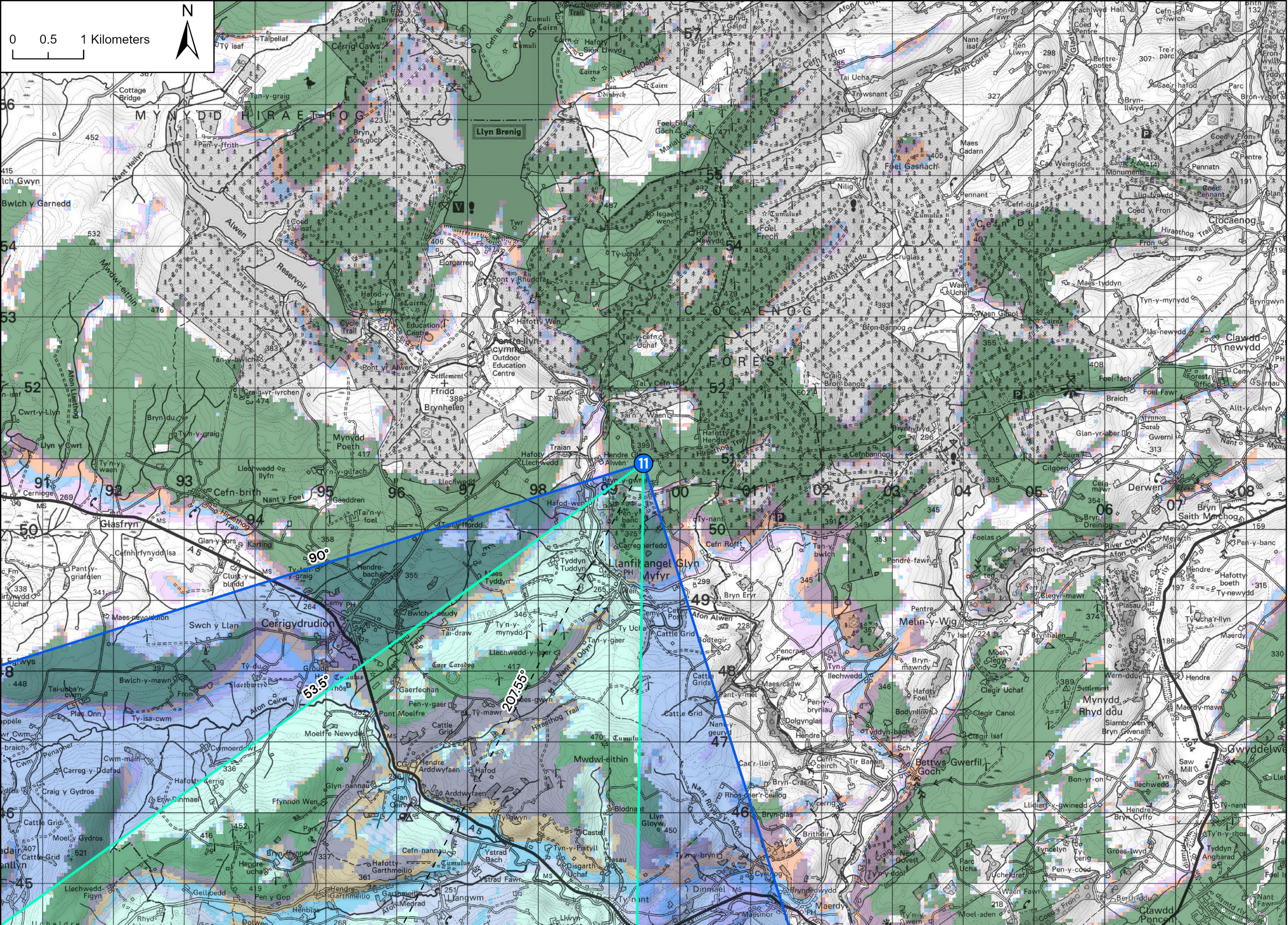


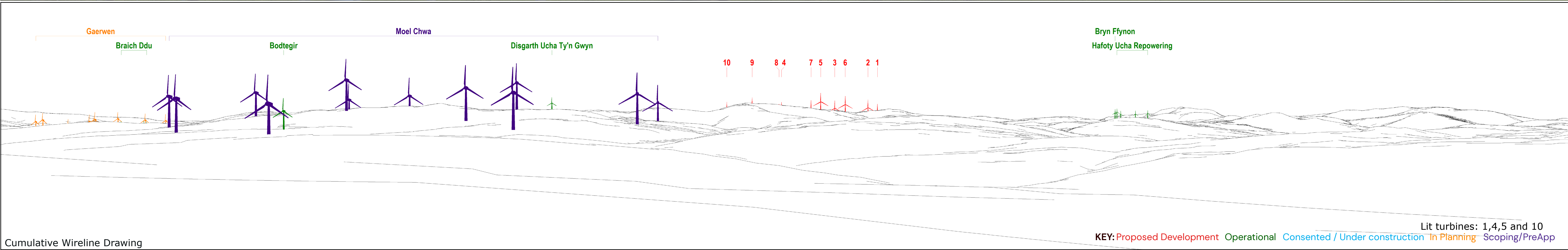
Viewpoint Location Plan - Site Context and Cumulative Wind Farms - Scale 1:150,000

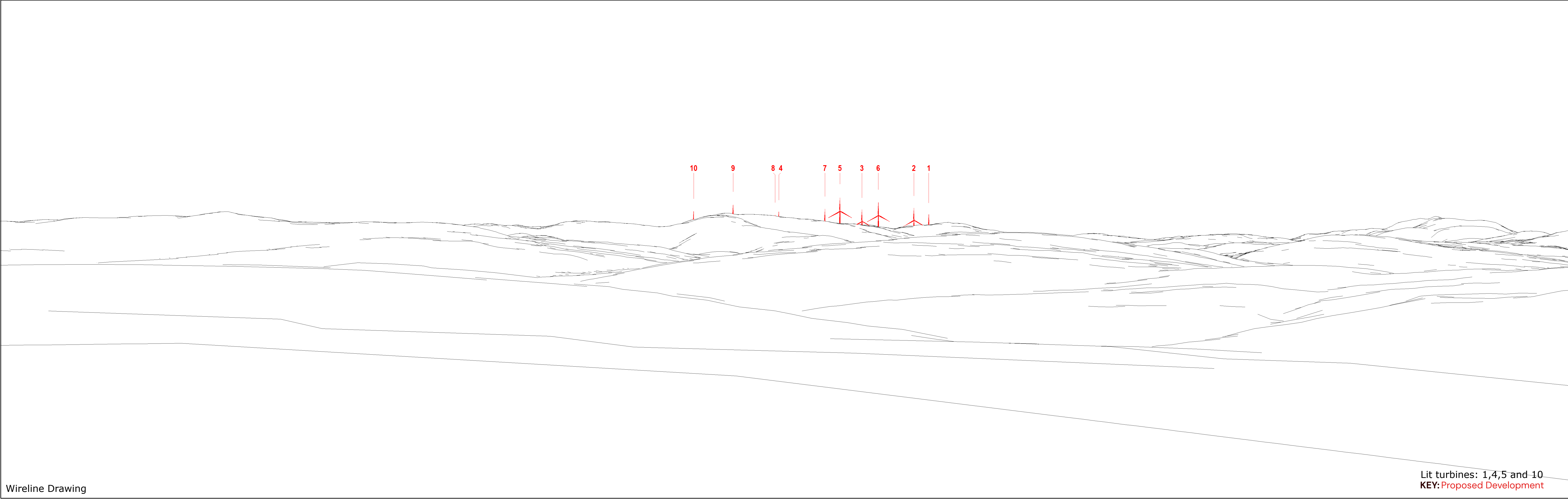
FOEL FACH WIND FARM



Viewpoint Location Plan - Visual Extents and Blade Tip ZTV - Scale 1:50,000

- Key**
- Application Boundary
 - Turbine Layout
- Blade Tip Zone of Theoretical Visibility (Various Heights)
- 1 to 2 Turbines Visible
 - 3 to 4 Turbines Visible
 - 5 to 6 Turbines Visible
 - 7 to 8 Turbines Visible
 - 9 to 10 Turbines Visible
- Wind Farm Status
- Operational
 - Consented / Under Construction
 - In Planning
 - Scoping
- Viewpoint Information
- L VIA Viewpoint
 - Centre of Visualisation (Bearing)
 - 53.5° Field of View
 - 90° Field of View





Viewpoint Information

FOEL FACH WIND FARM

OS Reference: E299486, N350934
Ground level: 373m (AOD)

Distance to nearest turbine: 10084m (T5)
Bearing to centre of photograph: 207.55°

Angle of view: 53.5° (planar)
Principal distance: 812.5mm
Paper size: 841 x 297 mm (half A1)
Correct printed image size: 820 x 260mm



Viewpoint 11: Footpath North of Bryn-y-gwrgi

(Sheet C)

Lit turbines: 1,4,5 and 10
KEY: Proposed Development



Photomontage

Viewpoint Information

FOEL FACH WIND FARM

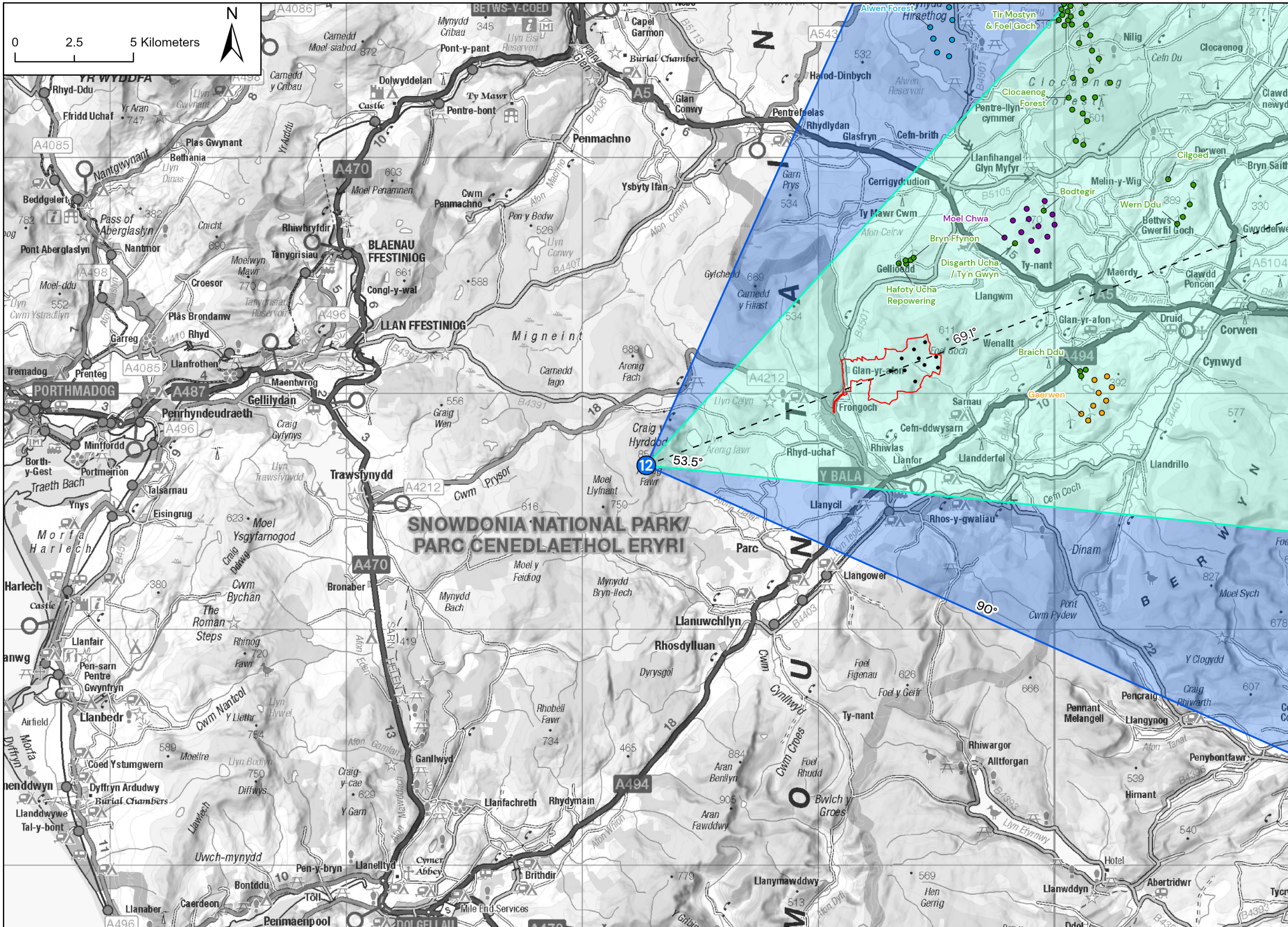
OS Reference: E299486, N350934
Ground level: 373m (AOD)

Distance to nearest turbine: 10084m (T5)
Bearing to centre of photograph: 207.55°

Angle of view: 53.5° (planar)
Principal distance: 812.5mm
Paper size: 841 x 297 mm (half A1)
Correct printed image size: 820 x 260mm

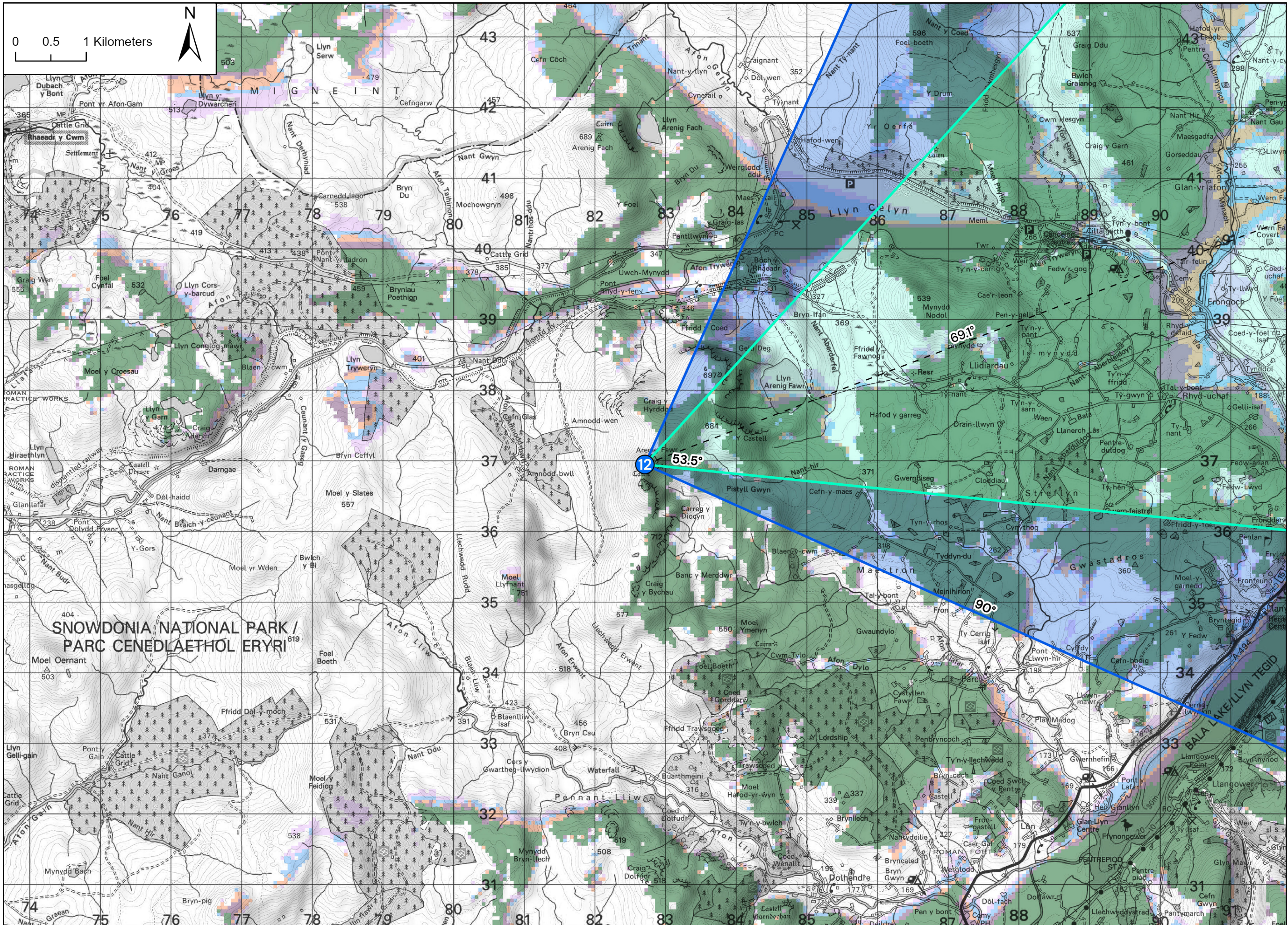
Camera: Canon 5D III, FFS
Lens: 50mm Fixed Focal Lens
Height: 1.5m
Date & Time: 06/08/2024 @ 19:31





Viewpoint Location Plan - Site Context and Cumulative Wind Farms - Scale 1:150,000

FOEL FACH WIND FARM

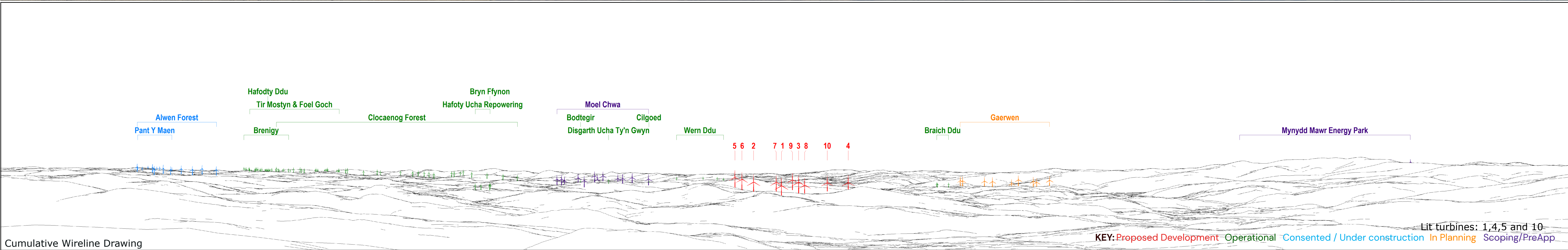


Viewpoint Location Plan - Visual Extents and Blade Tip ZTV - Scale 1:50,000

- Key**
- Application Boundary
 - Turbine Layout
 - Blade Tip Zone of Theoretical Visibility (Various Heights)
 - 1 to 2 Turbines Visible
 - 3 to 4 Turbines Visible
 - 5 to 6 Turbines Visible
 - 7 to 8 Turbines Visible
 - 9 to 10 Turbines Visible
 - Wind Farm Status
 - Operational
 - Consented / Under Construction
 - In Planning
 - Scoping
 - Viewpoint Information
 - L VIA Viewpoint
 - Centre of Visualisation (Bearing)
 - 53.5° Field of View
 - 90° Field of View



Baseline Photograph



Cumulative Wireline Drawing

Viewpoint Information

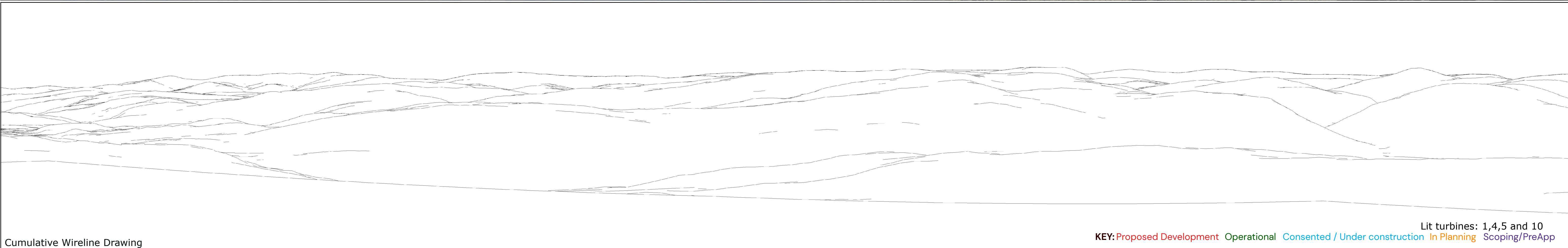
OS Reference: E282707, N336947
Ground level: 843m (AOD)
Distance to nearest turbine: 11098m (T1)
Bearing to centre of photograph: 69.1°
Angle of view: 90° (cylindrical)
Principal distance: 500mm
Paper size: 841 x 297 mm (half A1)
Correct printed image size: 820 x 260mm
Camera: Canon R5, FFS
Lens: 50mm Fixed Focal Lens
Height: 1.5m
Date & Time: 02/04/2025 @ 11:28

FOEL FACH WIND FARM





Baseline Photograph

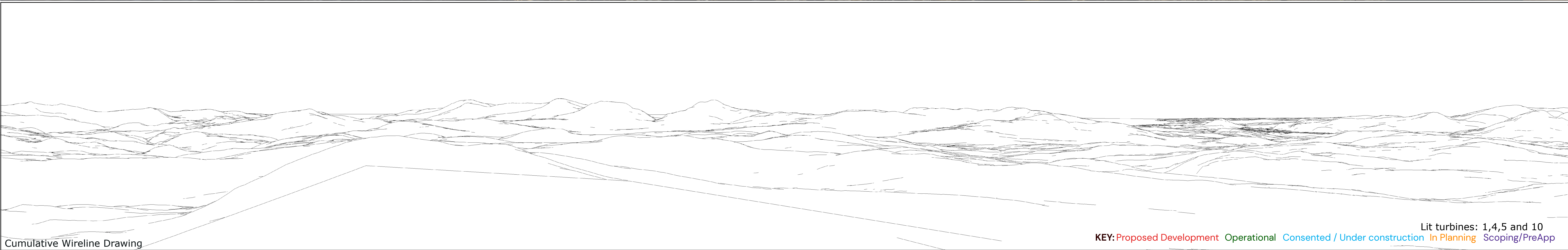


Cumulative Wireline Drawing

KEY: Proposed Development Operational Consented / Under construction In Planning Scoping/PreApp
Lit turbines: 1,4,5 and 10



Baseline Photograph

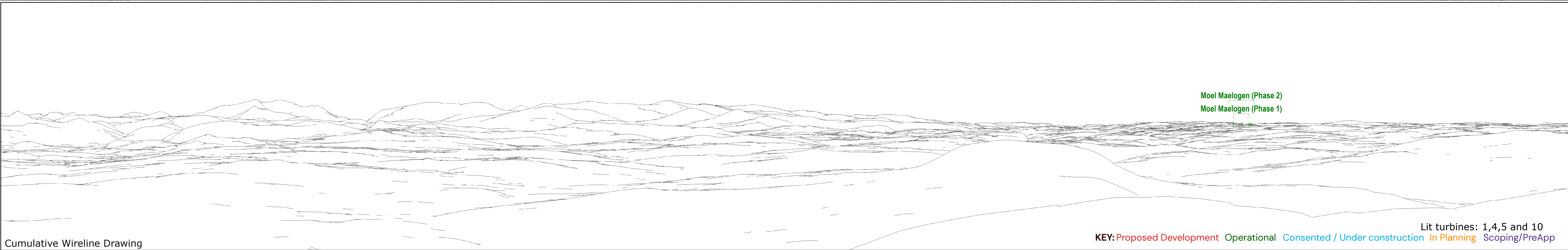


Cumulative Wireline Drawing

KEY: Proposed Development Operational Consented / Under construction In Planning Scoping/PreApp Lit turbines: 1,4,5 and 10



Baseline Photograph



Cumulative Wireline Drawing

Viewpoint Information

FOEL FACH WIND FARM

OS Reference: E282707, N336947
Ground level: 843m (AOD)

Distance to nearest turbine: 11098m (T1)
Bearing to centre of photograph: 339.1°

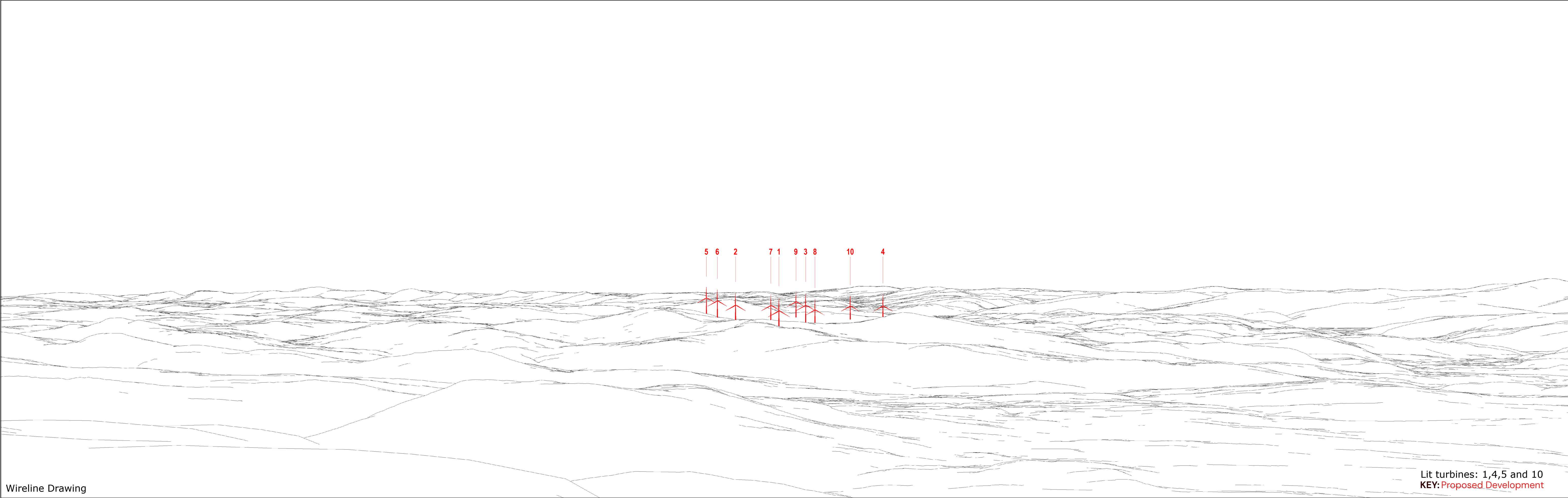
Angle of view: 90° (cylindrical)
Principal distance: 500mm
Paper size: 841 x 297 mm (half A1)
Correct printed image size: 820 x 260mm

Camera: Canon R5, FFS
Lens: 50mm Fixed Focal Lens
Height: 1.5m
Date & Time: 02/04/2025 @ 11:28

KEY: Proposed Development Operational Consented / Under construction In Planning Scoping/PreApp
Lit turbines: 1,4,5 and 10



(Sheet E)
Viewpoint 12: Arenig Fawr



Wireline Drawing

Lit turbines: 1,4,5 and 10
KEY: Proposed Development



Photomontage