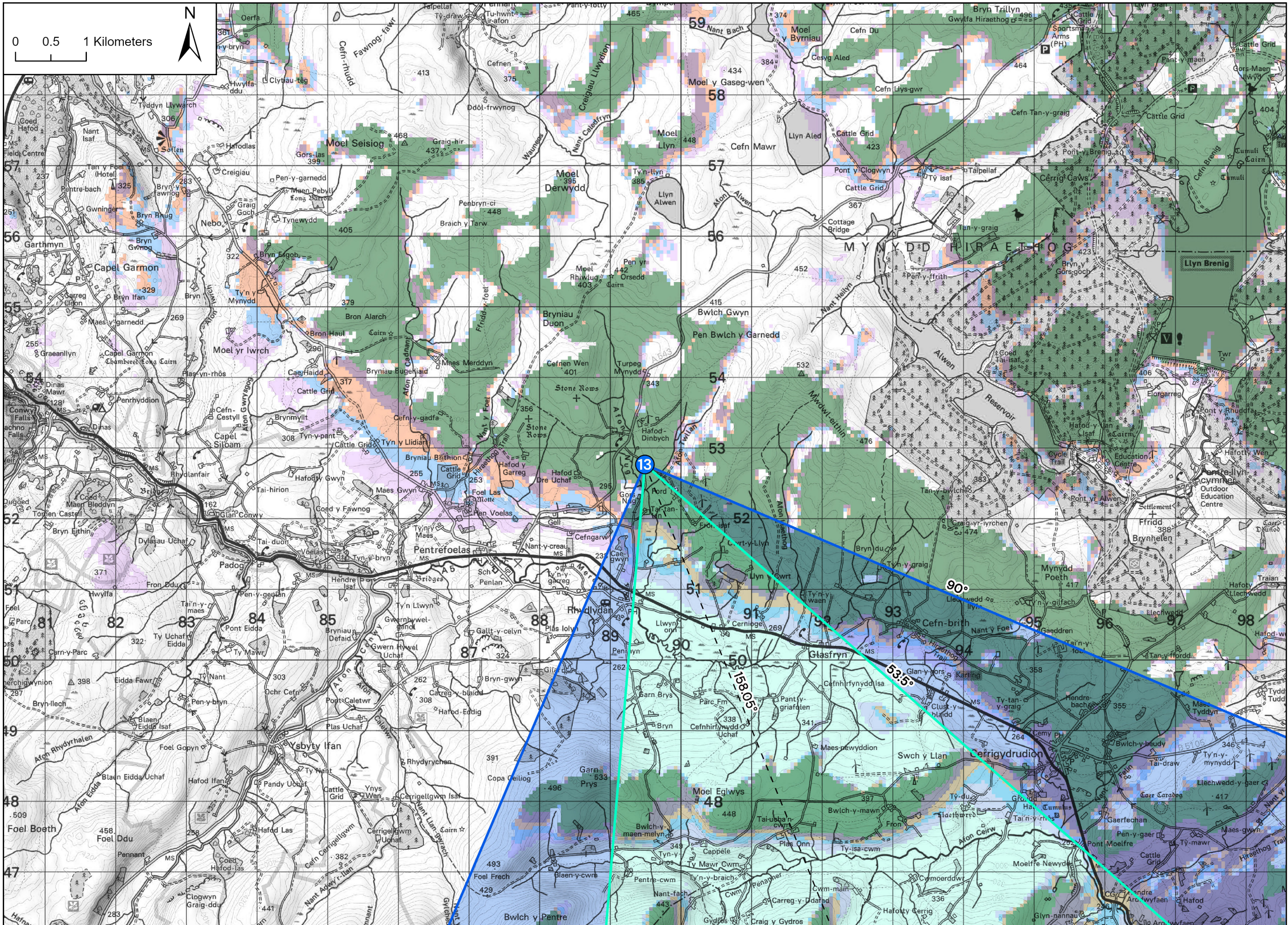


Viewpoint Location Plan - Site Context and Cumulative Wind Farms - Scale 1:150,000

FOEL FACH WIND FARM

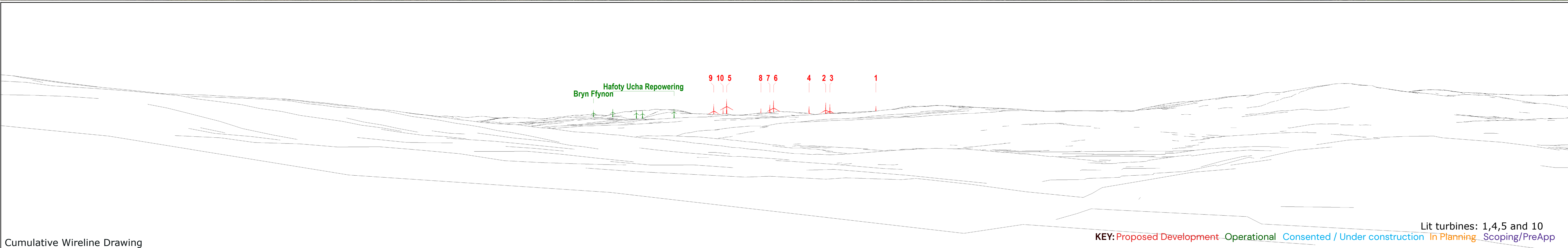


Viewpoint Location Plan - Visual Extents and Blade Tip ZTV - Scale 1:50,000

- Key**
- Application Boundary
 - Turbine Layout
- Blade Tip Zone of Theoretical Visibility (Various Heights)
- 1 to 2 Turbines Visible
 - 3 to 4 Turbines Visible
 - 5 to 6 Turbines Visible
 - 7 to 8 Turbines Visible
 - 9 to 10 Turbines Visible
- Wind Farm Status
- Operational
 - Consented / Under Construction
 - In Planning
 - Scoping
- Viewpoint Information
- L VIA Viewpoint
 - Centre of Visualisation (Bearing)
 - 53.5° Field of View
 - 90° Field of View

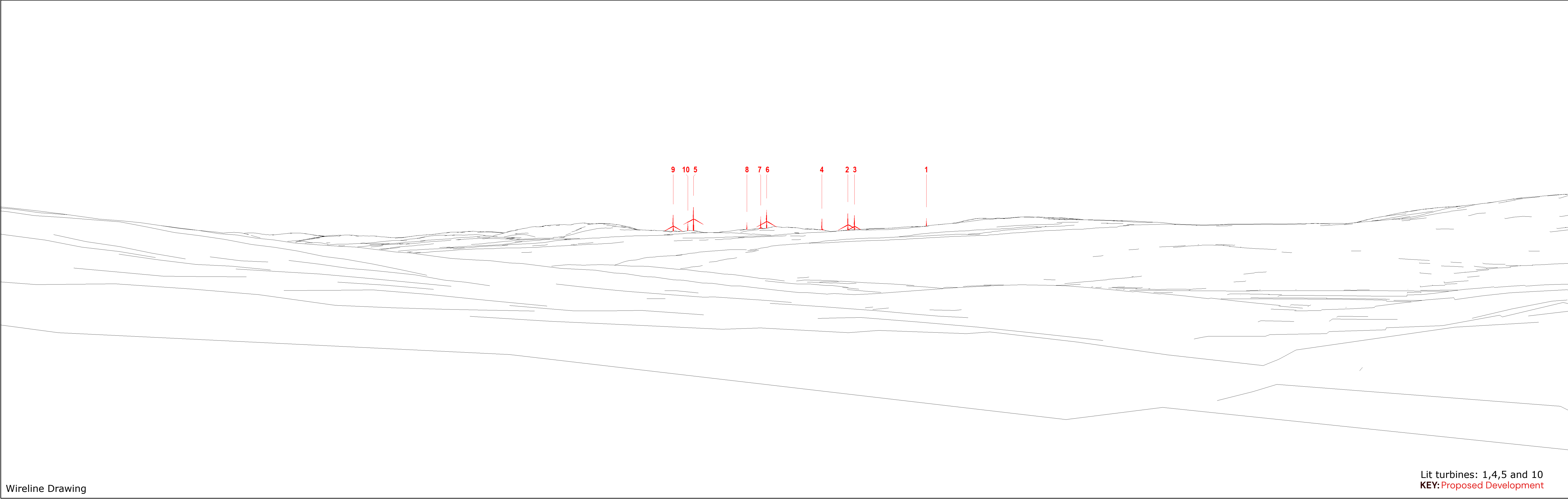


Baseline Photograph



Cumulative Wireline Drawing

KEY: Proposed Development Operational Consented / Under construction In Planning Scoping/PreApp
Lit turbines: 1,4,5 and 10

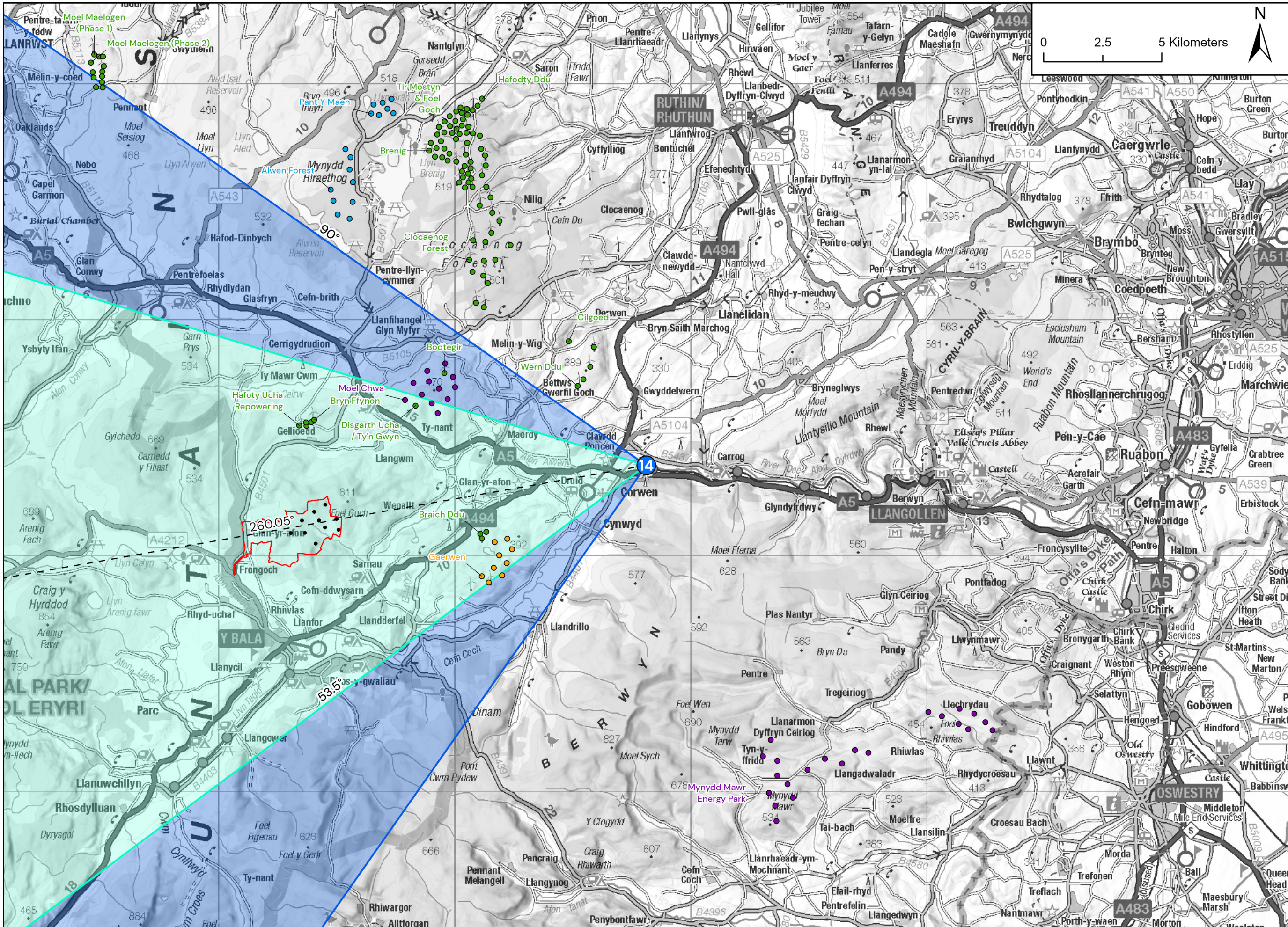


Wireline Drawing

Lit turbines: 1,4,5 and 10
KEY: Proposed Development

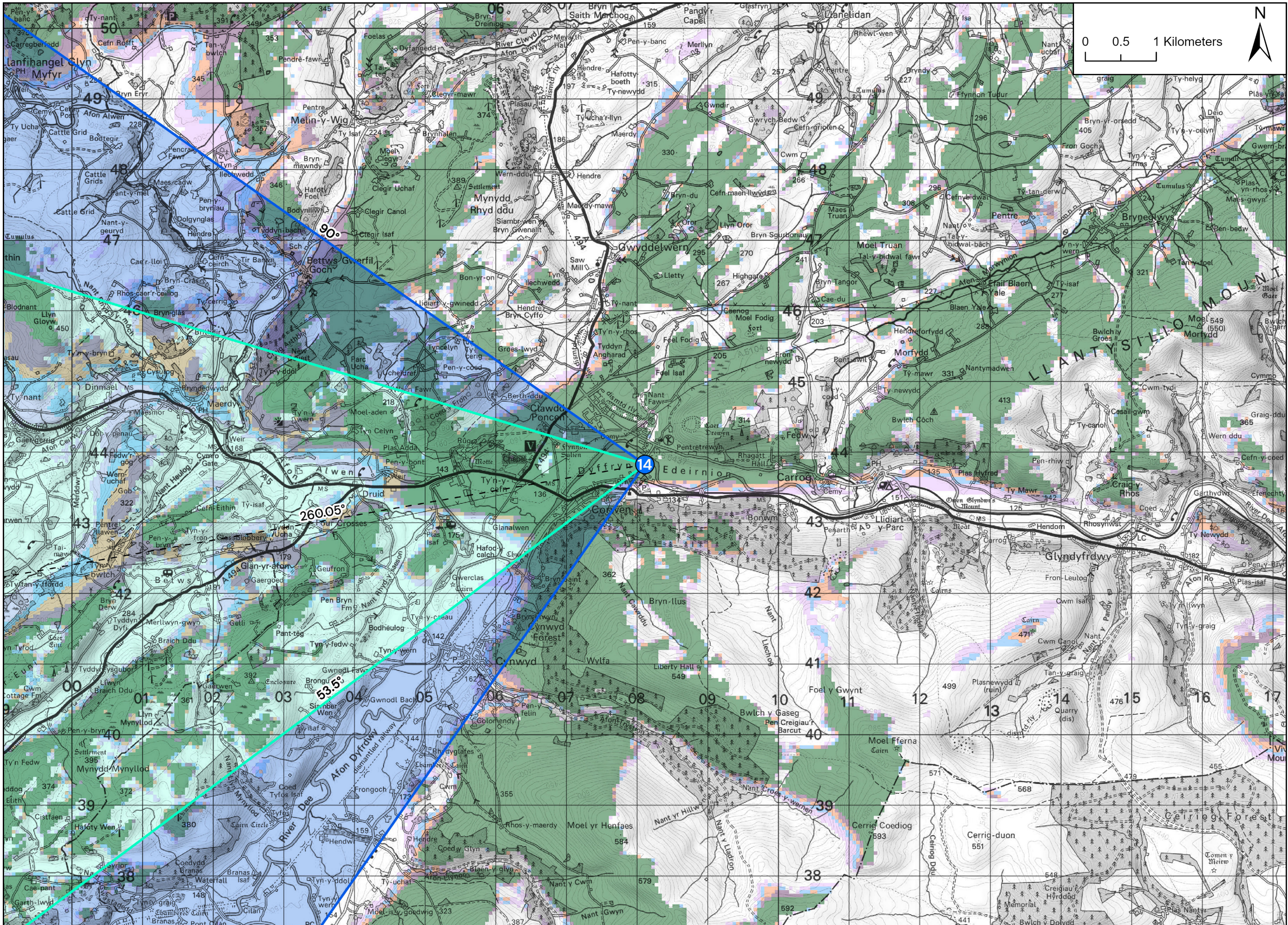


Photomontage



Viewpoint Location Plan - Site Context and Cumulative Wind Farms - Scale 1:150,000

FOEL FACH WIND FARM

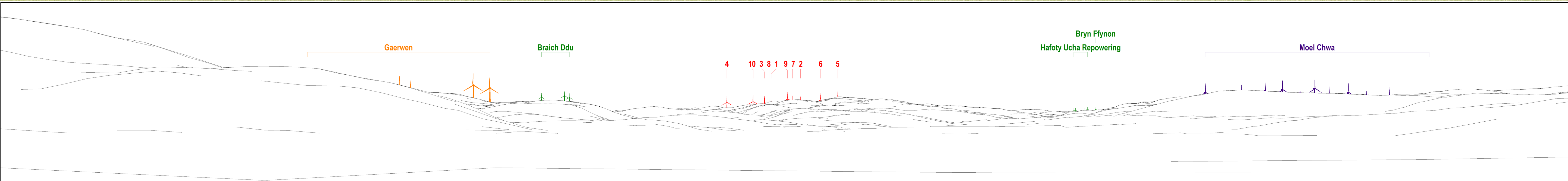


Viewpoint Location Plan - Visual Extents and Blade Tip ZTV - Scale 1:50,000

- Key**
- Application Boundary
 - Turbine Layout
- Blade Tip Zone of Theoretical Visibility (Various Heights)
- 1 to 2 Turbines Visible
 - 3 to 4 Turbines Visible
 - 5 to 6 Turbines Visible
 - 7 to 8 Turbines Visible
 - 9 to 10 Turbines Visible
- Wind Farm Status
- Operational
 - Consented / Under Construction
 - In Planning
 - Scoping
- Viewpoint Information
- L VIA Viewpoint
 - Centre of Visualisation (Bearing)
 - 53.5° Field of View
 - 90° Field of View



Baseline Photograph



Cumulative Wireline Drawing

Viewpoint Information

FOEL FACH WIND FARM

OS Reference: E308110, N343825
Ground level: 134m (AOD)

Distance to nearest turbine: 13321m (T9)
Bearing to centre of photograph: 260.05°

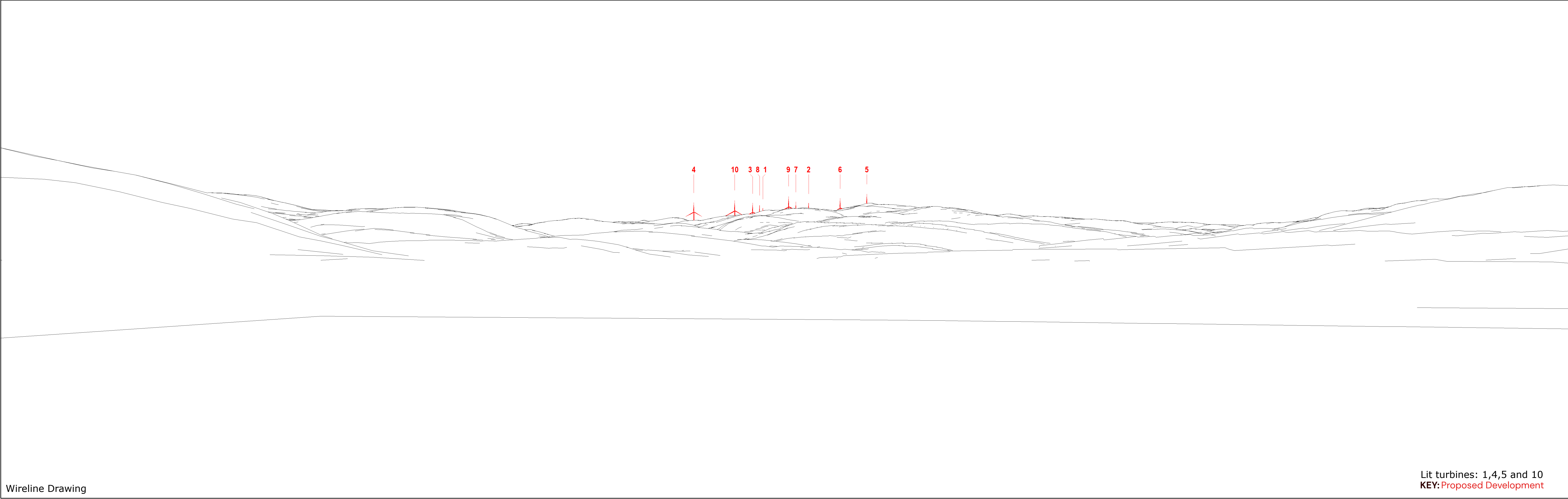
Angle of view: 90° (cylindrical)
Principal distance: 500mm
Paper size: 841 x 297 mm (half A1)
Correct printed image size: 820 x 260mm

Camera: Canon 5D III, FFS
Lens: 50mm Fixed Focal Lens
Height: 1.5m
Date & Time: 06/08/2024 @ 11:53

KEY: Proposed Development Operational Consented / Under construction In Planning Scoping/PreApp
Lit turbines: 1,4,5 and 10



(Sheet B)
Viewpoint 14: Green Lane Corwen



Wireline Drawing

Lit turbines: 1,4,5 and 10
KEY: Proposed Development



Photomontage

Viewpoint Information

FOEL FACH WIND FARM

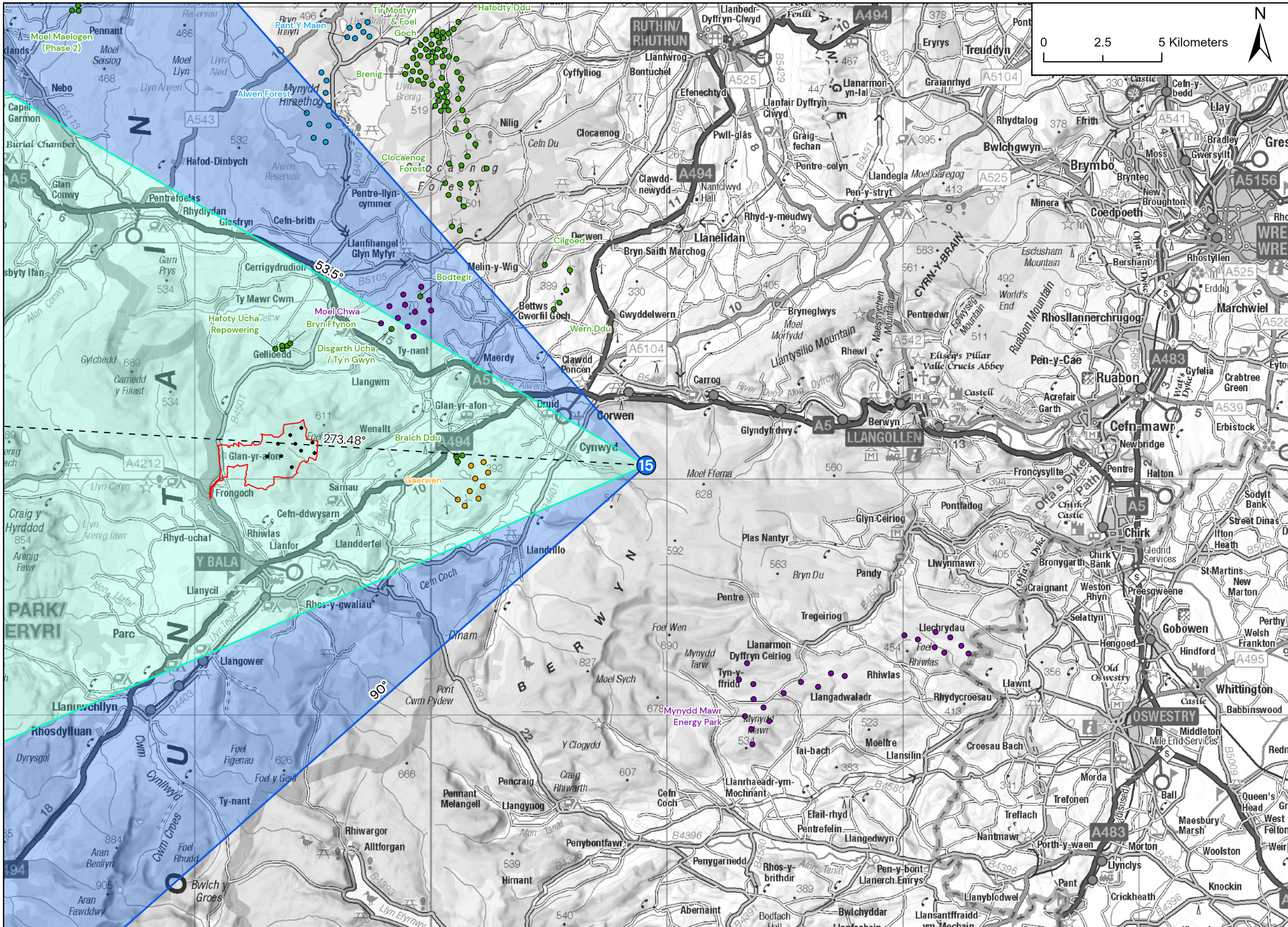
OS Reference: E308110, N343825
Ground level: 134m (AOD)

Distance to nearest turbine: 13321m (T9)
Bearing to centre of photograph: 260.05°

Angle of view: 53.5° (planar)
Principal distance: 812.5mm
Paper size: 841 x 297 mm (half A1)
Correct printed image size: 820 x 260mm

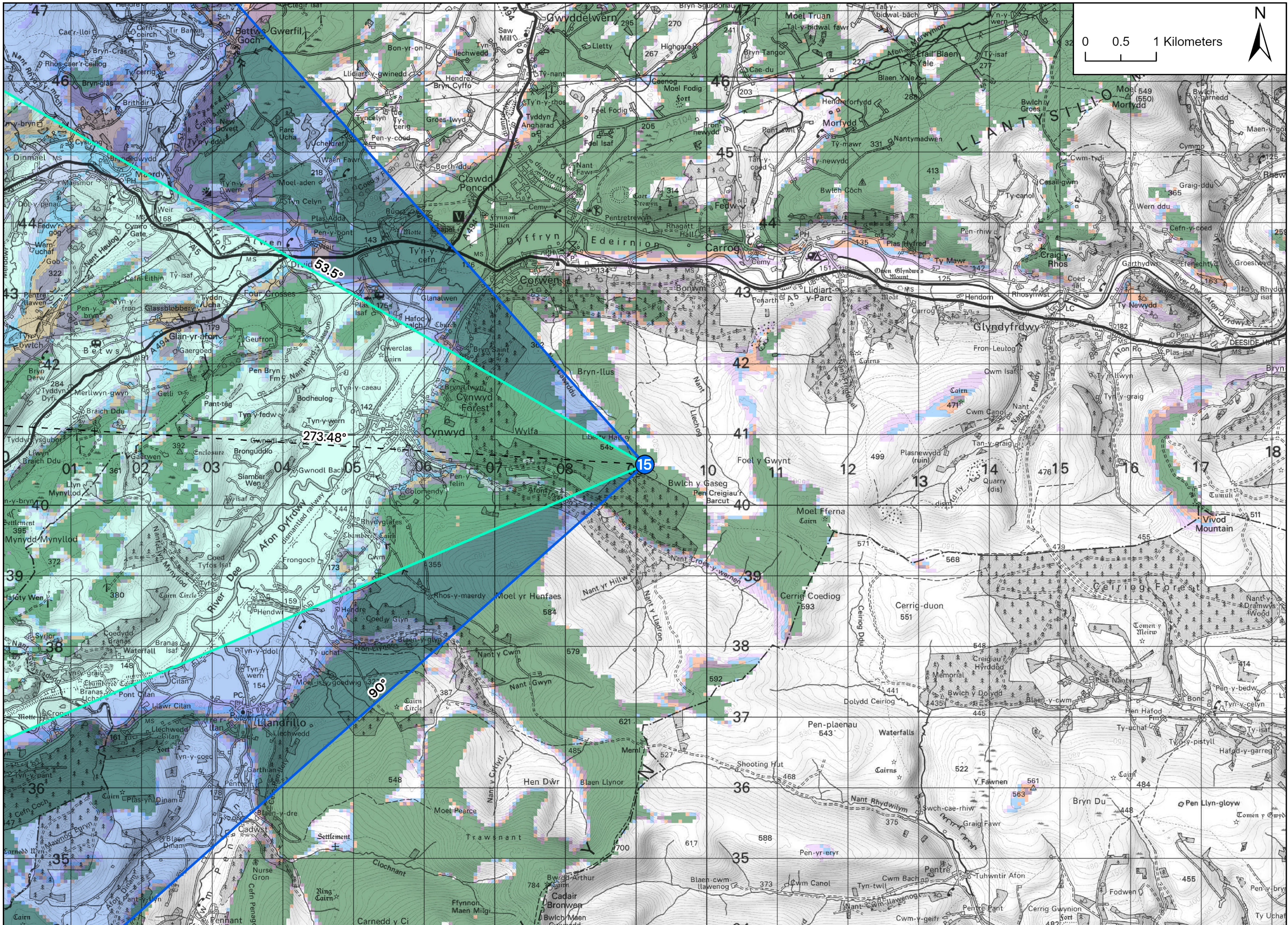
Camera: Canon 5D III, FFS
Lens: 50mm Fixed Focal Lens
Height: 1.5m
Date & Time: 06/08/2024 @ 11:53





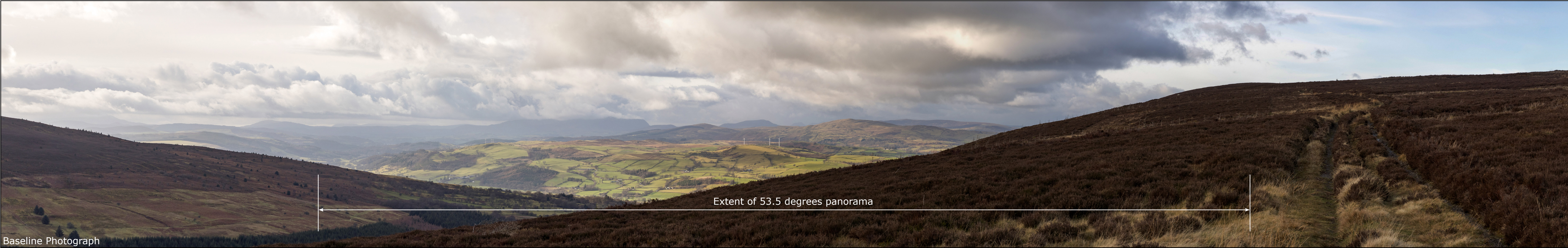
Viewpoint Location Plan - Site Context and Cumulative Wind Farms - Scale 1:150,000

FOEL FACH WIND FARM

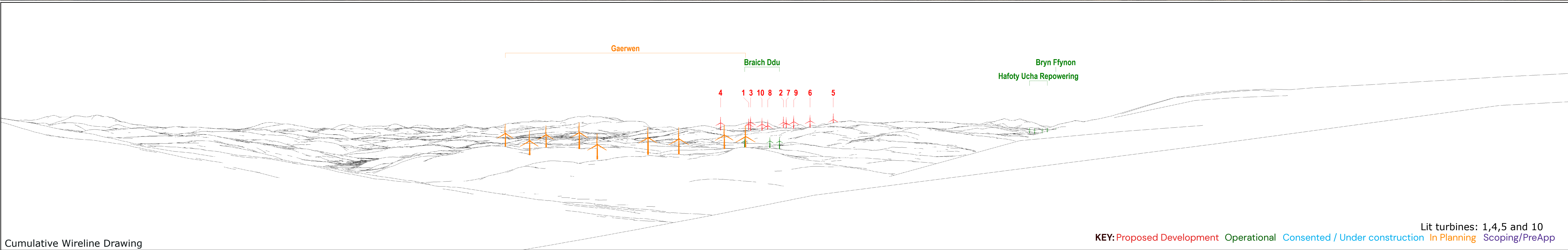


Viewpoint Location Plan - Visual Extents and Blade Tip ZTV - Scale 1:50,000

- Key**
- Application Boundary
 - Turbine Layout
- Blade Tip Zone of Theoretical Visibility (Various Heights)
- 1 to 2 Turbines Visible
 - 3 to 4 Turbines Visible
 - 5 to 6 Turbines Visible
 - 7 to 8 Turbines Visible
 - 9 to 10 Turbines Visible
- Wind Farm Status
- Operational
 - Consented / Under Construction
 - In Planning
 - Scoping
- Viewpoint Information
- LVIA Viewpoint
 - Centre of Visualisation (Bearing)
 - 53.5° Field of View
 - 90° Field of View



Baseline Photograph



Cumulative Wireline Drawing

Viewpoint Information

OS Reference: E309125, N340576
Ground level: 522m (AOD)

Distance to nearest turbine: 14063m (T10)
Bearing to centre of photograph: 273.48°

Angle of view: 90° (cylindrical)
Principal distance: 500mm
Paper size: 841 x 297 mm (half A1)
Correct printed image size: 820 x 260mm

Camera: Canon R5, FFS
Lens: 50mm Fixed Focal Lens
Height: 1.5m
Date & Time: 31/01/2025 @ 13:31

FOEL FACH WIND FARM

KEY: Proposed Development Operational Consented / Under construction In Planning Scoping/PreApp

Lit turbines: 1,4,5 and 10



