



Photomontage

Viewpoint Information

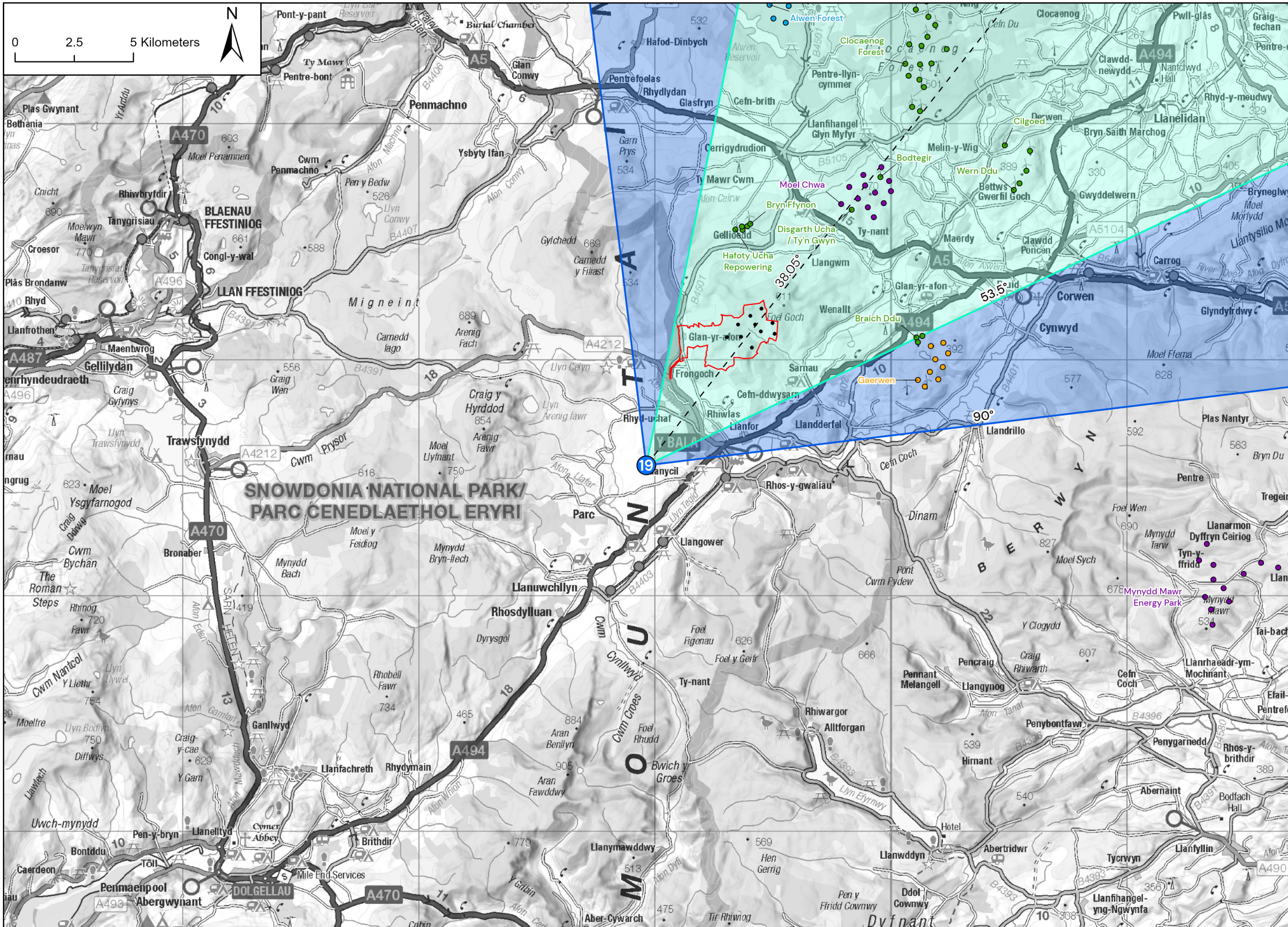
OS Reference: E295306, N346326	Distance to nearest turbine: 4240m (T5)	Angle of view: 53.5° (planar)	Camera: Canon R5, FFS
Ground level: 308m (AOD)	Bearing to centre of photograph: 193.57°	Principal distance: 812.5mm	Lens: 50mm Fixed Focal Lens
		Paper size: 841 x 297 mm (half A1)	Height: 1.5m
		Correct printed image size: 820 x 260mm	Date & Time: 29/01/2025 @ 15:40

FOEL FACH WIND FARM



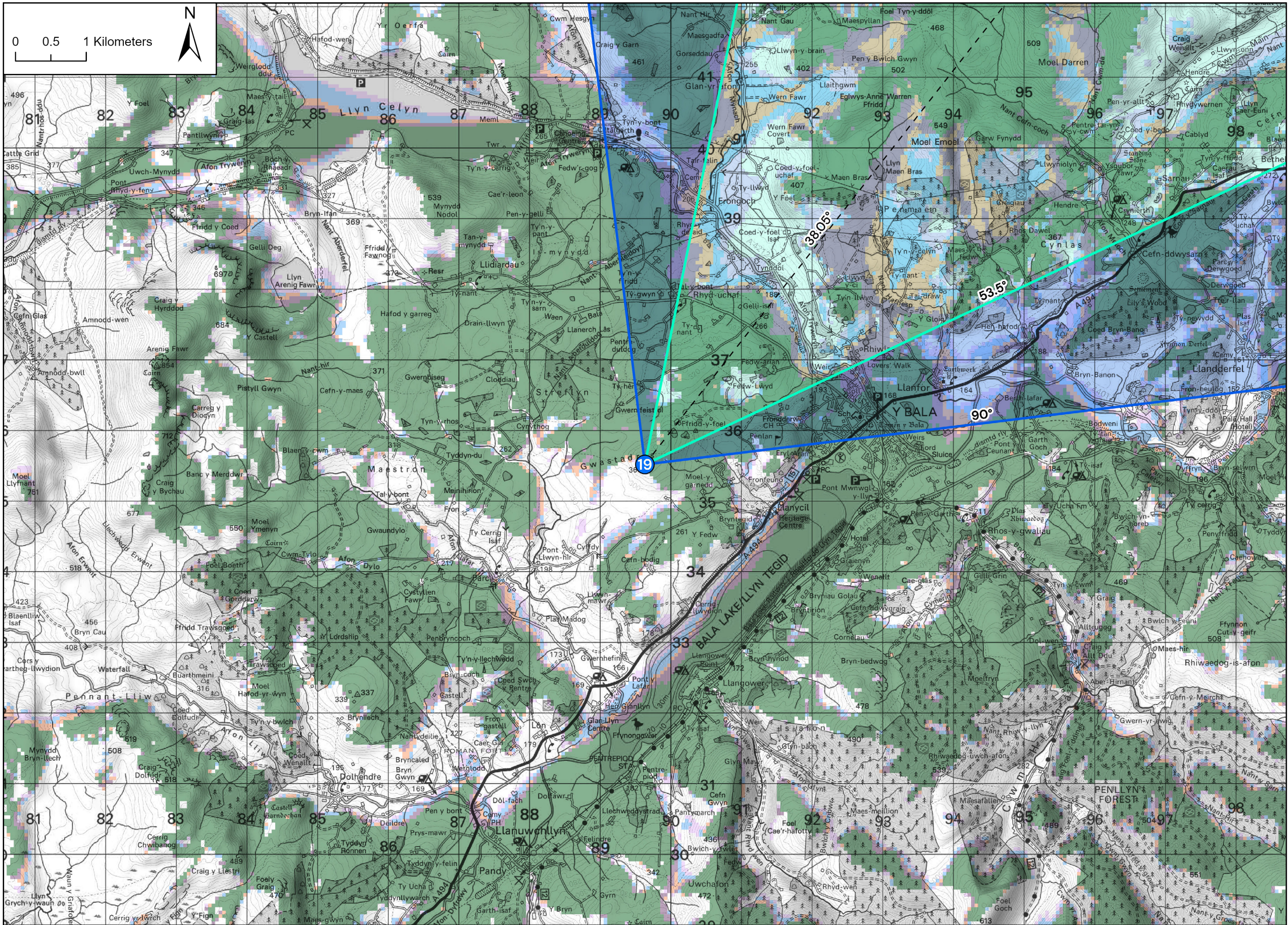
Viewpoint 18: B4501 South of Cerrigydrudion

(Sheet D)



Viewpoint Location Plan - Site Context and Cumulative Wind Farms - Scale 1:150,000

FOEL FACH WIND FARM

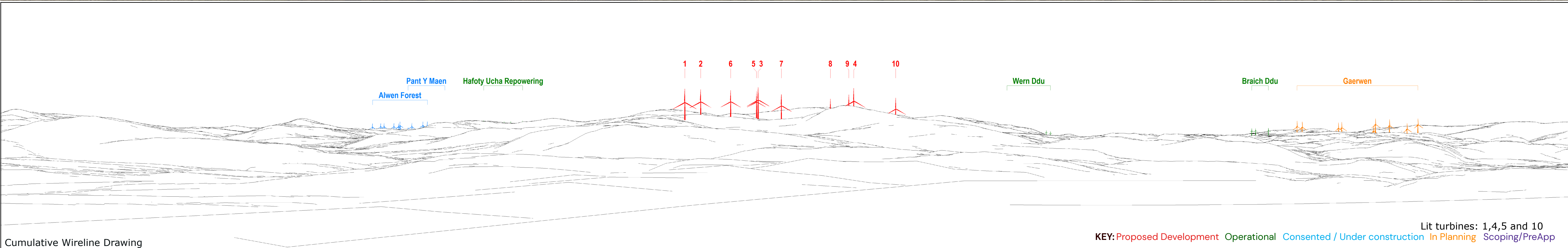


Viewpoint Location Plan - Visual Extents and Blade Tip ZTV - Scale 1:50,000

- Key**
- Application Boundary
 - Turbine Layout
- Blade Tip Zone of Theoretical Visibility (Various Heights)
- 1 to 2 Turbines Visible
 - 3 to 4 Turbines Visible
 - 5 to 6 Turbines Visible
 - 7 to 8 Turbines Visible
 - 9 to 10 Turbines Visible
- Wind Farm Status
- Operational
 - Consented / Under Construction
 - In Planning
 - Scoping
- Viewpoint Information
- L VIA Viewpoint
 - Centre of Visualisation (Bearing)
 - 53.5° Field of View
 - 90° Field of View



Baseline Photograph



Cumulative Wireline Drawing

Viewpoint Information

OS Reference: E289633, N335518
Ground level: 359m (AOD)
Distance to nearest turbine: 6423m (T1)
Bearing to centre of photograph: 38.05°
Angle of view: 90° (cylindrical)
Principal distance: 500mm
Paper size: 841 x 297 mm (half A1)
Correct printed image size: 820 x 260mm
Camera: Canon R5, FFS
Lens: 50mm Fixed Focal Lens
Height: 1.5m
Date & Time: 31/01/2025 @ 09:43

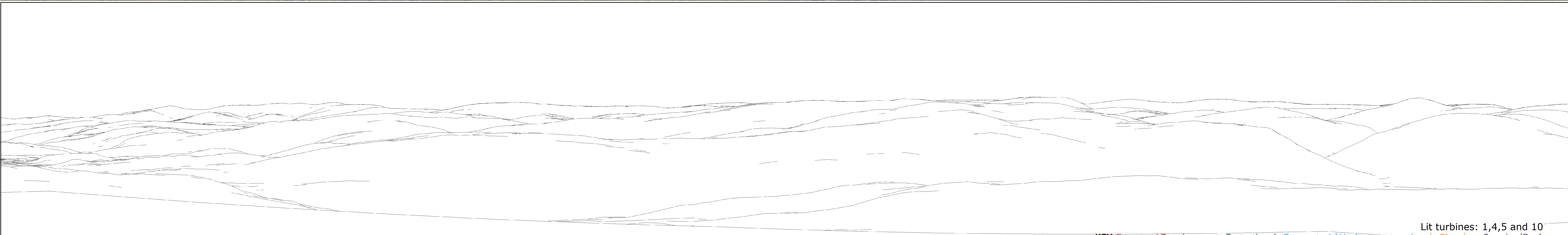
FOEL FACH WIND FARM



Lit turbines: 1,4,5 and 10
KEY: Proposed Development Operational Consented / Under construction In Planning Scoping/PreApp
(Sheet B)
Viewpoint 19: Moel y Garnedd



Baseline Photograph

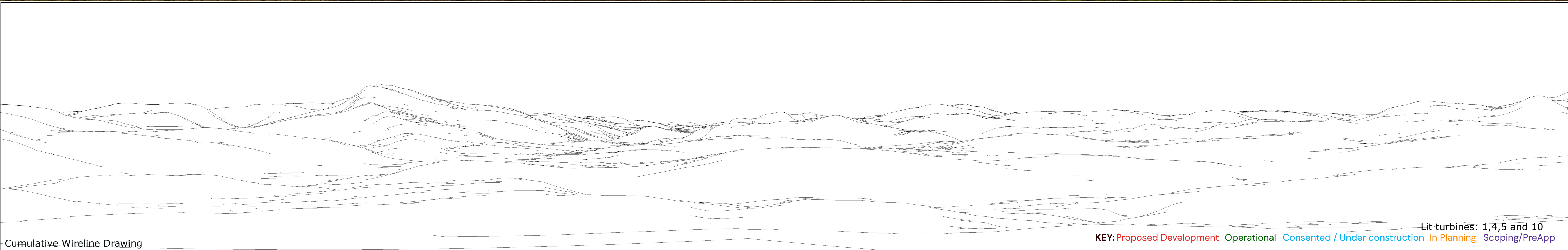


Cumulative Wireline Drawing

KEY: Proposed Development Operational Consented / Under construction In-Planning Scoping/PreApp Lit turbines: 1,4,5 and 10



Baseline Photograph

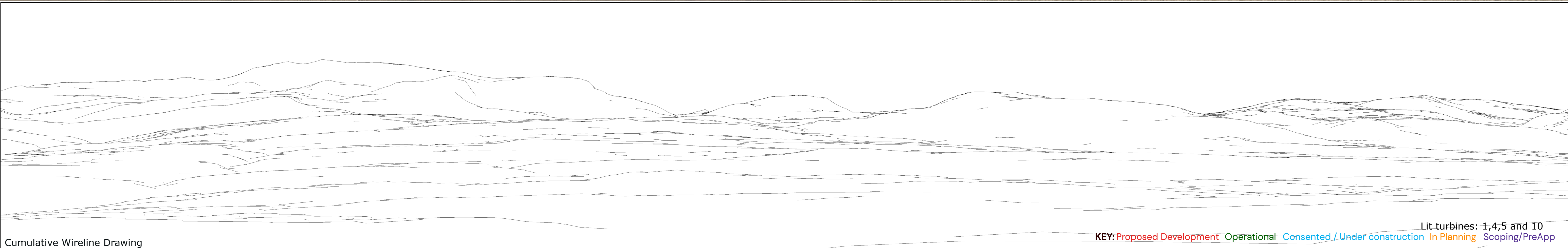


Cumulative Wireline Drawing

KEY: Proposed Development Operational Consented / Under construction In Planning Scoping/PreApp
Lit turbines: 1,4,5 and 10

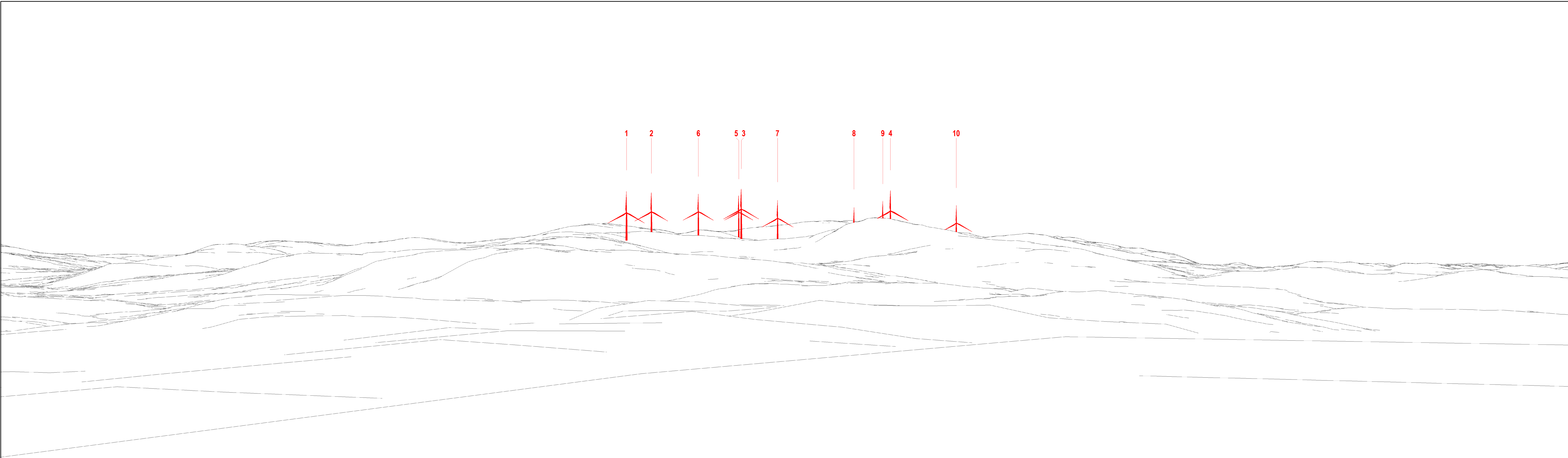


Baseline Photograph



Cumulative Wireline Drawing

KEY: Proposed Development Operational Consented / Under construction In Planning Scoping/PreApp Lit turbines: 1,4,5 and 10

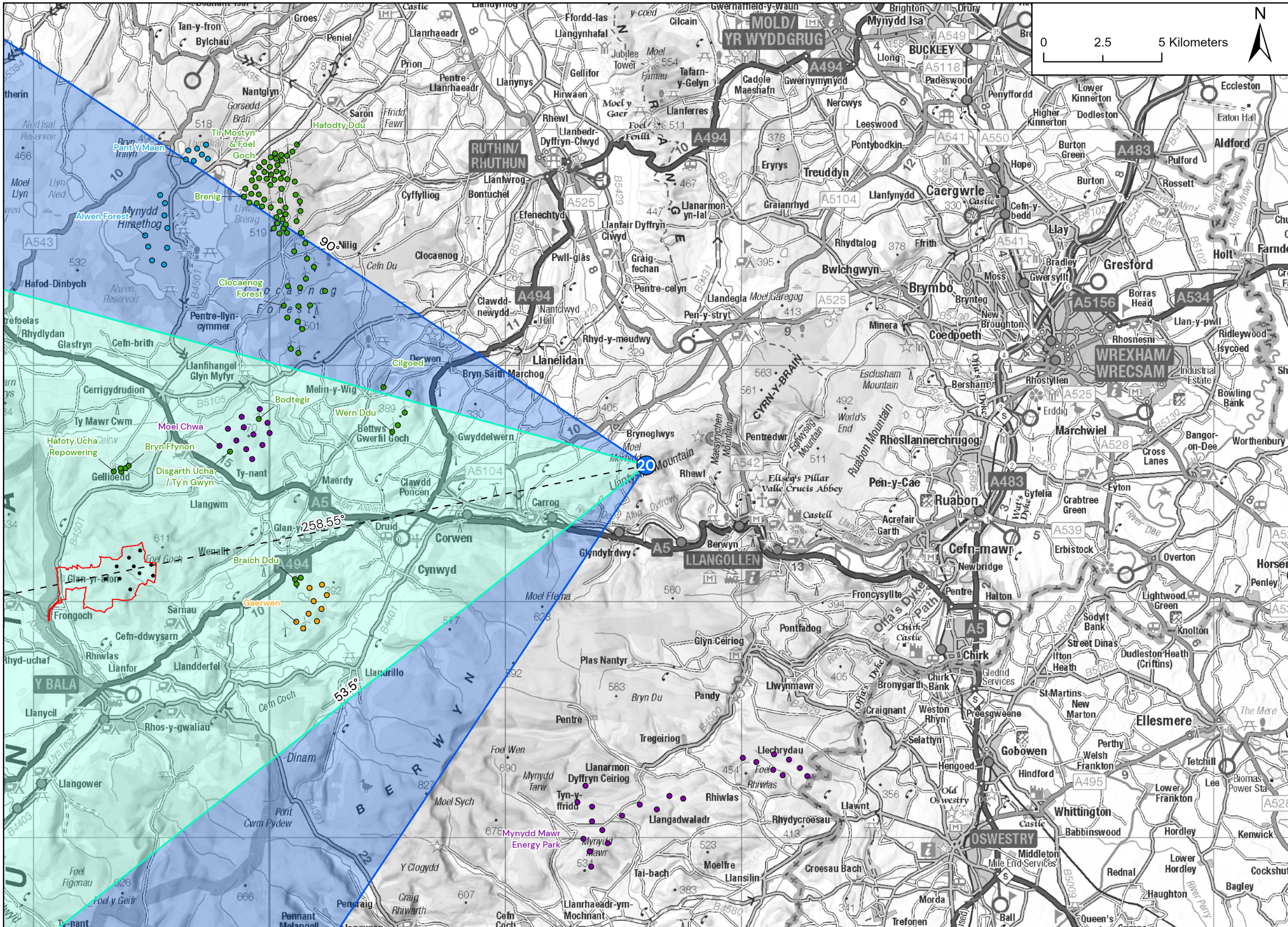


Wireline Drawing

Lit turbines: 1,4,5 and 10
KEY: Proposed Development

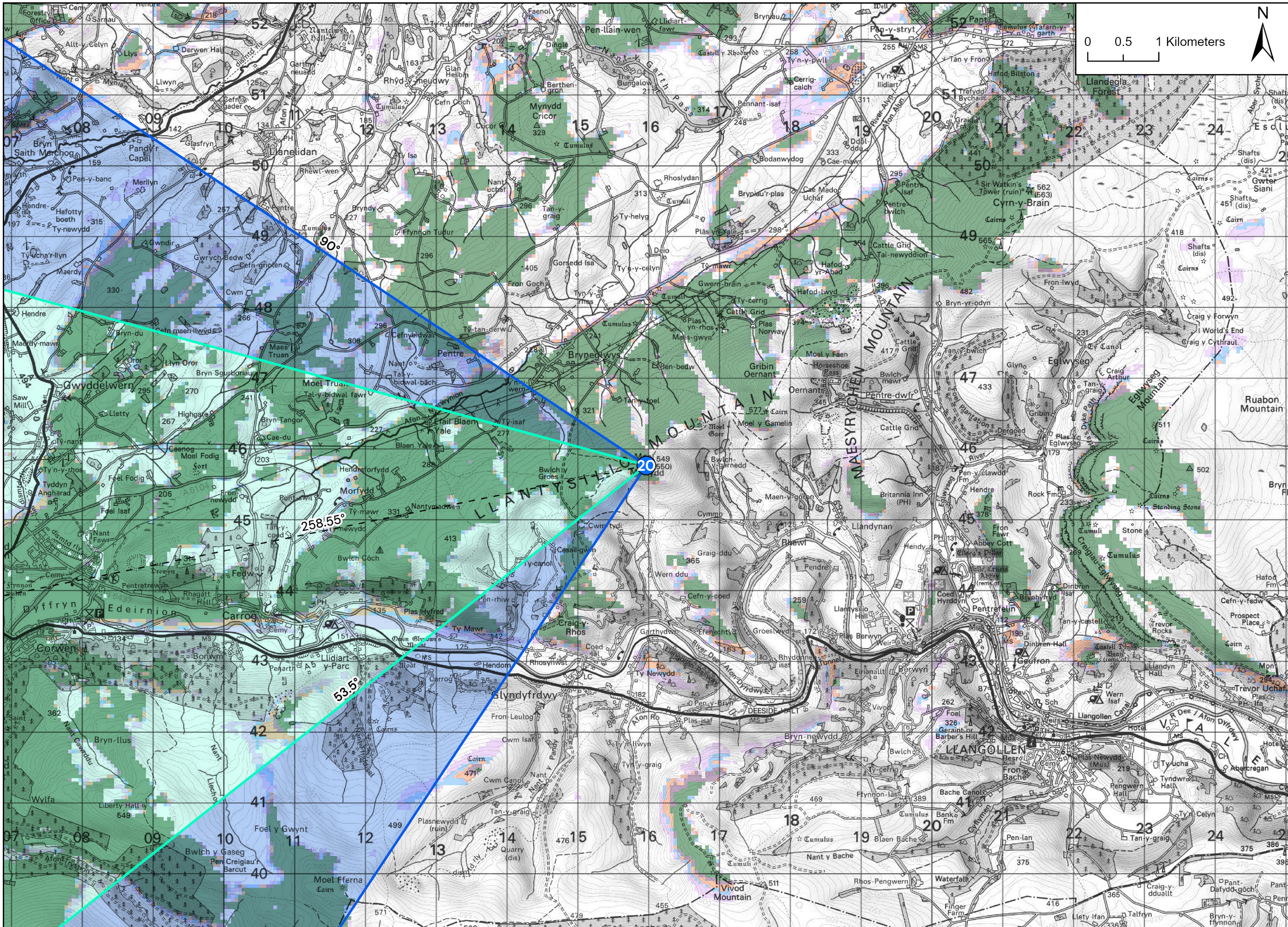


Photomontage



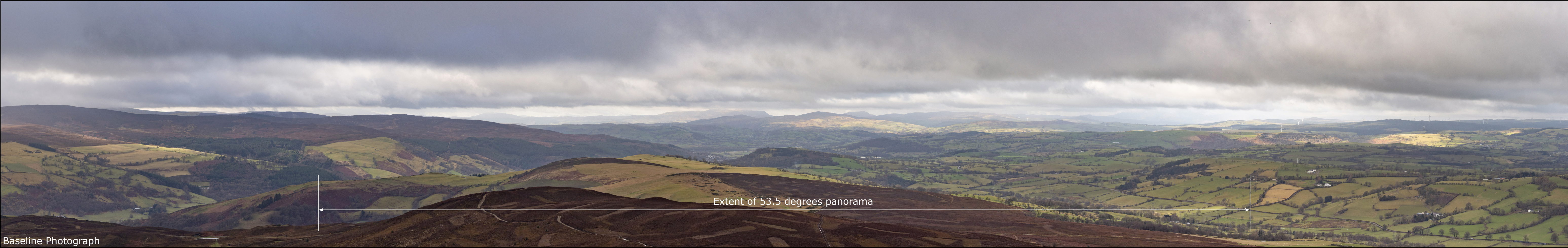
Viewpoint Location Plan - Site Context and Cumulative Wind Farms - Scale 1:150,000

FOEL FACH WIND FARM

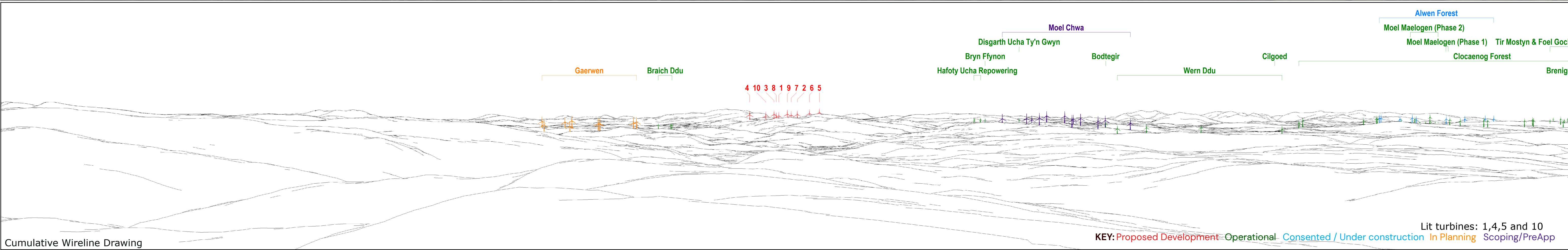


Viewpoint Location Plan - Visual Extents and Blade Tip ZTV - Scale 1:50,000

- Key**
- Application Boundary
 - Turbine Layout
- Blade Tip Zone of Theoretical Visibility (Various Heights)
- 1 to 2 Turbines Visible
 - 3 to 4 Turbines Visible
 - 5 to 6 Turbines Visible
 - 7 to 8 Turbines Visible
 - 9 to 10 Turbines Visible
- Wind Farm Status
- Operational
 - Consented / Under Construction
 - In Planning
 - Scoping
- Viewpoint Information
- L VIA Viewpoint
 - Centre of Visualisation (Bearing)
 - 53.5° Field of View
 - 90° Field of View



Baseline Photograph



Cumulative Wireline Drawing

Viewpoint Information

FOEL FACH WIND FARM

OS Reference: E315967, N345767
Ground level: 543m (AOD)

Distance to nearest turbine: 21402m (T9)
Bearing to centre of photograph: 258.55°

Angle of view: 90° (cylindrical)
Principal distance: 500mm
Paper size: 841 x 297 mm (half A1)
Correct printed image size: 820 x 260mm

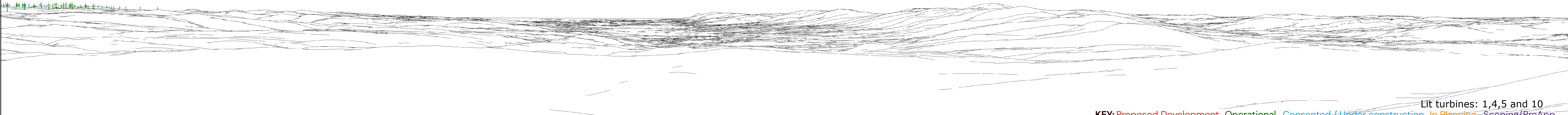
Camera: Canon R5, FFS
Lens: 50mm Fixed Focal Lens
Height: 1.5m
Date & Time: 29/01/2025 @ 11:46





Baseline Photograph

Pant Y Maen
Tir Mostyn & Foel Goch
Clocaenog Forest
Brenigy
Hafodty Ddu



Cumulative Wireline Drawing

KEY: Proposed Development Operational Consented / Under construction In Planning Scoping/PreApp
Lit turbines: 1,4,5 and 10